



Realize the happiness of all employees, provide value-for-money products,
promote the development of the dental industry and society.



HUANGHUA PROMISEE DENTAL CO.,LTD.

ADD:Mould Industry Garden,Empolder Section,
Huanghua,061100 Hebei,China

TEL: +86-317-8882702

P.C:061100

<http://www.cotisen-dental.com>

Email:info@promiseedental.com

2025



Health Nature Beautiful



Company Profile

Huanghua Promisee Dental Co., Ltd. is a professional manufacturer of disposable dental products. Promisee Dental covers an area of 18,000 square meters and has two factories, which is accompanying infrastructure such as R & D, production, storage and sales. Since established in 2008, Promisee Dental has continuously improved the technological level, highlighted the advantages of mold design and manufacturing, and developed and produced a series of disposable dental products. In 2011, the independent brand "Cotisen" was established. In 2017, the Brazilian branch was established. In 2019, the Indian branch was established. In 2020, the Japanese branch was established. In 2023, the Singapore Branch and the Slovakia Office were established. In 2023, a comprehensive factory building covering an area of 30,000 square meters is currently under preparation in the development zone. It was put into production in the end of 2024

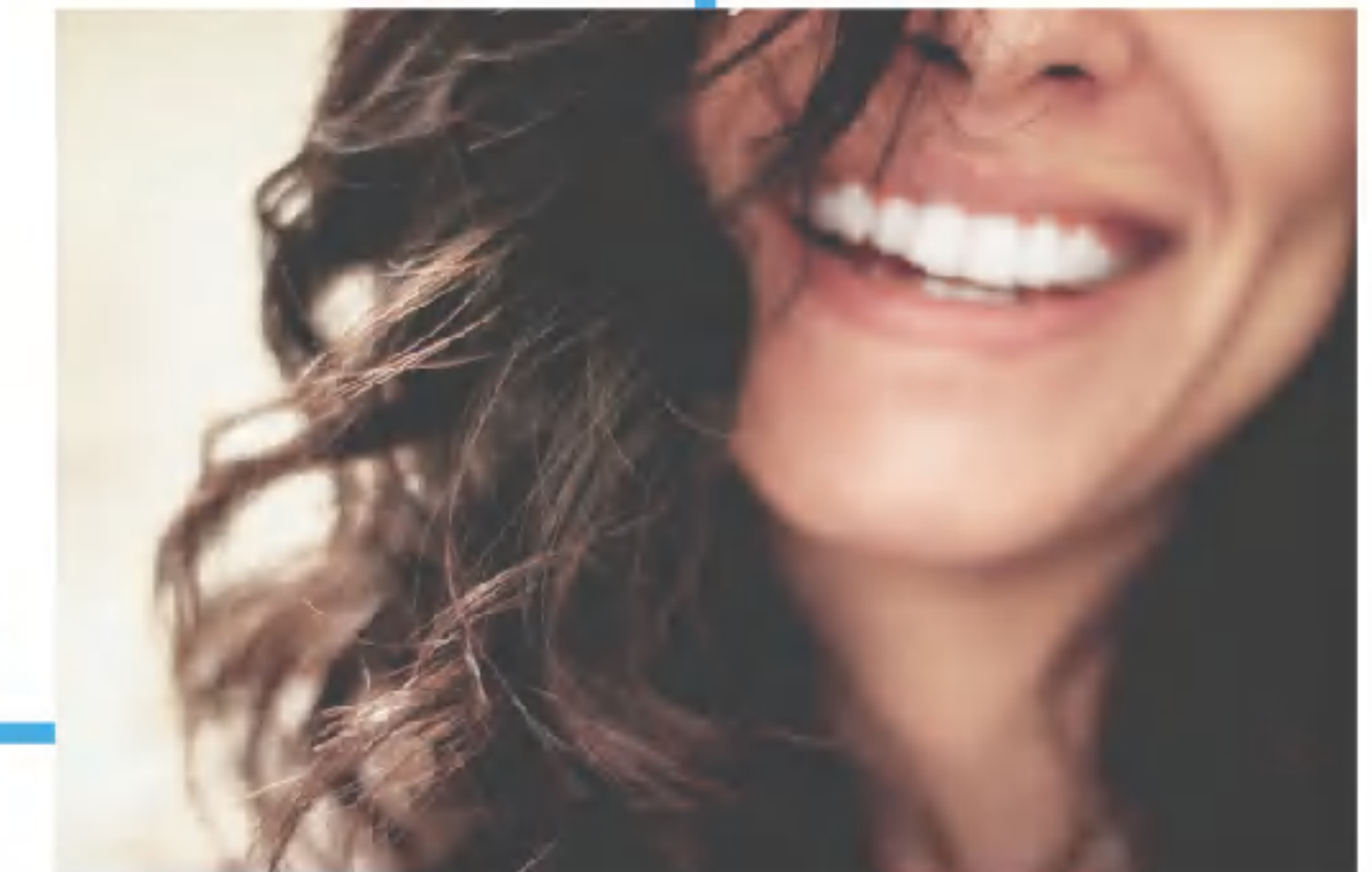
Becoming a well-respected and sustainable illustrious enterprise is our corporate vision. Realizing the happiness of all employees, and providing value-for-money products, promoting the social development of the industry is our corporate mission of Promisee Dental. Everyone in Promisee Dental will pursue "Health, Nature and Beautiful" with the core values of "integrity, collaboration, passion, innovation, sustainability and gratitude".



Health



Nature



Beautiful



"Cotisen" is Promisee Dental's own brand, the company has passed ISO13485, CE, FDA, FSC and other quality and safety system certifications. The main products are Dental Sectional Contoured Matrices Kit, Micro Applicators, Face Shields and more than 100 kinds of dental products. Promisee Dental has more than 200 exclusive agents for Cotisen brand in domestic, and the products are sold to more than 80 countries and regions such as Europe, America, Japan, South Korea, and the Middle East. Etc. Cotisen brand products have been widely recognized by domestic and abroad customers.



From 2013 to 2015, Promisee Dental was rated as an advanced enterprise of scientific and technological innovation in Huanghua City for three consecutive years. In 2014, it was rated as a small and mid-sized technology-based provincial high-tech enterprise in Hebei Province. In 2019, it was listed as a key export enterprise in Hebei Province and an enterprise on the positive list of environmental protection. According to the development in the past three years, in 2019, it was rated as the leading enterprise of high growth among the thousand leading enterprises in Hebei Province. In 2020, our company was rated as an advanced collective in Hebei Province to fight against the new crown pneumonia epidemic. In March 2021, the general manager of Heqingxuan won the "Mayor's Special Award" of Huanghua City, and Promisee Dental won the "Government Quality (Nomination) Award" of Huanghua City, and the same year won the title of "Specialized, Precision and New Small and Mid-sized Enterprises". Since the establishment of the company, Promisee Dental has continuously carried out independent research and development, taking science and technology as the primary productive force, and currently has 63 patents, including 6 invention patents (5 Chinese patents and 1 US patent), 39 utility model patents, and 18 appearance patents.



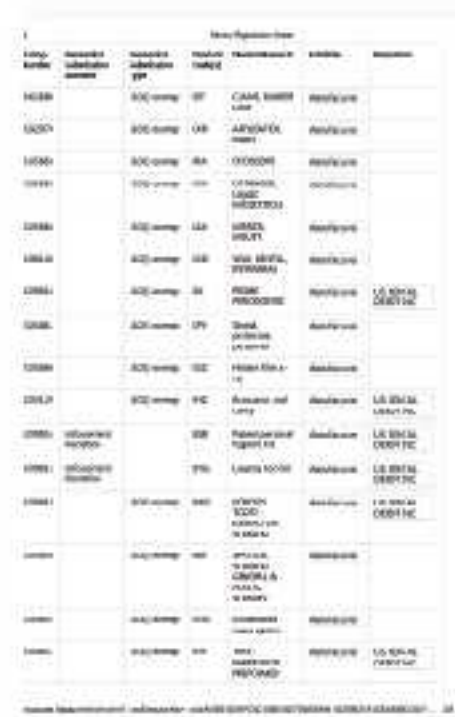
CE



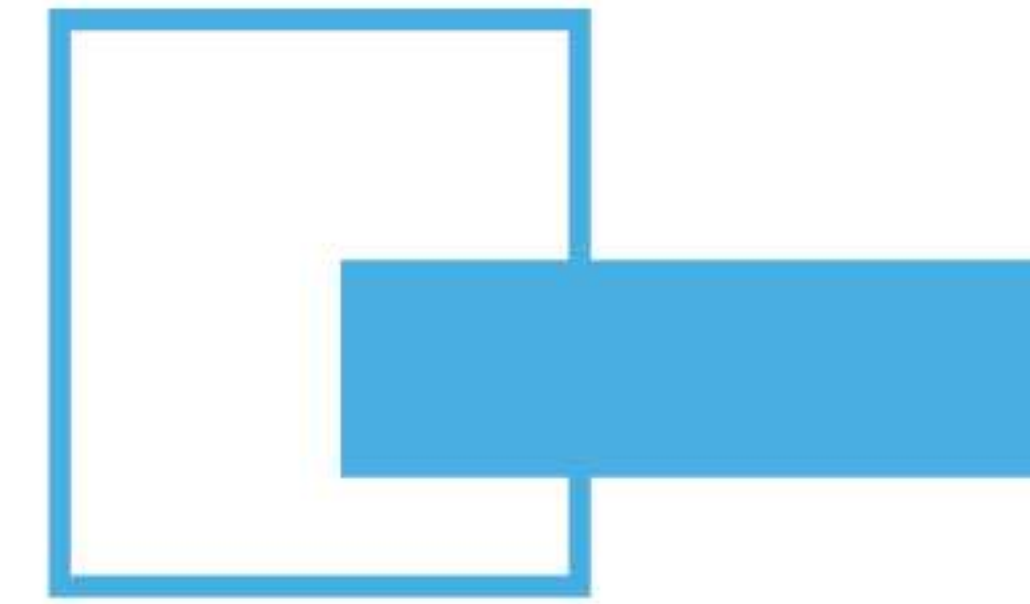
FSC



ISO



FDA



CONTENT

- 05 Dental Sectional Contoured Matrices Kits
- 14 Dental Dam Kit
- 17 Dental Retractor
- 23 Micro Applicator
- 26 Prophy Brush/Prophy Cup/Prophy Strip/Prophy Paste
Polishing Discs/ Composite Polisher
- 30 Base Plate Wax
- 33 Dental Implant Guide System Kit
- 35 Impression Tray
- 39 Denture Box
- 43 Disposable Dental Air Water Syringe Tips
- 45 Disposable Saliva Ejectors
- 48 Cotton Roll Dispenser
- 50 Bur Holder Box & Measuring Gauge
- 54 Safety Glasses & Face Shield with Frame
- 58 Medical Instrument
- 71 Children Teeth Series
- 75 Environmentally friendly products



Dental Sectional Contoured Matrices Kits



Item: SC1001/SC1101
Name: Dental Sectional Contoured Matrices Kits
Packing: 1set/box, 10 boxes/ctn
Carton Size: 300X255X270mm
Weight: 6.3 KGS



SC1001 Contains:

PW01 20 pcs PW02 20 pcs PW03 20 pcs Dental Wedge	SC1201L 50 pcs Ordinary Matrix Bands	SC1202M 50 pcs Ordinary Matrix Bands	SC1203S 50 pcs Ordinary Matrix Bands	SC0601L 10 pcs SC0602S 10 pcs Resin Matrix Bands SC0301 6 pcs Silicone Clearance Wedge	SC08 3 pcs Adhesive Tip Applicator
SC0206 1 pc SC0205 1 pc SC0204 1 pc Clamping Ring for Dental Use	SC1204L 20 pcs Subgingival Matrix Bands	SC1205M 20 pcs Subgingival Matrix Bands	SC1206S 20 pcs Subgingival Matrix Bands	WedgeGuard WG01 15 pcs Dental Wedge PW05 (left) 15 pcs (right) 15 pcs Dental Wedge PW06 10 pcs	SC0702 1pc Forceps

SC1101 Contains:

PW01 20 pcs PW02 20 pcs PW03 20 pcs Dental Wedge	SC1301L 50 pcs Ordinary Matrix Bands	SC1302M 50 pcs Ordinary Matrix Bands	SC1303S 50 pcs Ordinary Matrix Bands	SC0601L 10 pcs SC0602S 10 pcs Resin Matrix Bands SC0301 6 pcs Silicone Clearance Wedge	SC08 3 pcs Adhesive Tip Applicator
SC0206 1pc SC0205 1pc SC0204 1pc Clamping Ring for Dental Use	SC1304L 20 pcs Subgingival Matrix Bands	SC1305M 20 pcs Subgingival Matrix Bands	SC1306S 20 pcs Subgingival Matrix Bands	WedgeGuard WG01 15 pcs Dental Wedge PW05 (left) 15 pcs (right) 15 pcs Dental Wedge PW06 10 pcs	SC0702 1pc Forceps



Dental Sectional Contoured Matrices Kits



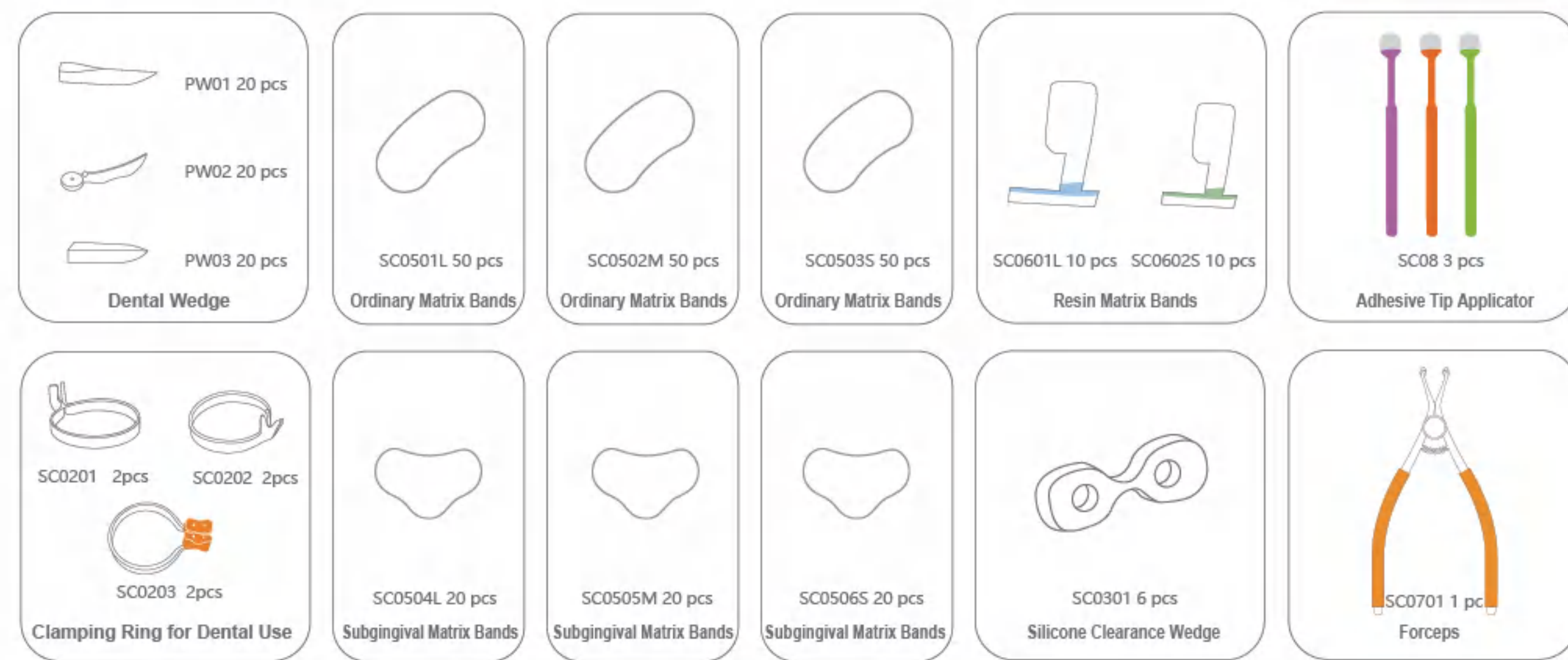
Dental Sectional Contoured Matrices Kits



Item: SC01
Name: Dental Sectional Contoured Matrices Kits
Packing: 1 set/box,10 boxes/ctn
Carton Size: 310X250X270mm
Weight: 4.9 KGS



SC01 Contains:



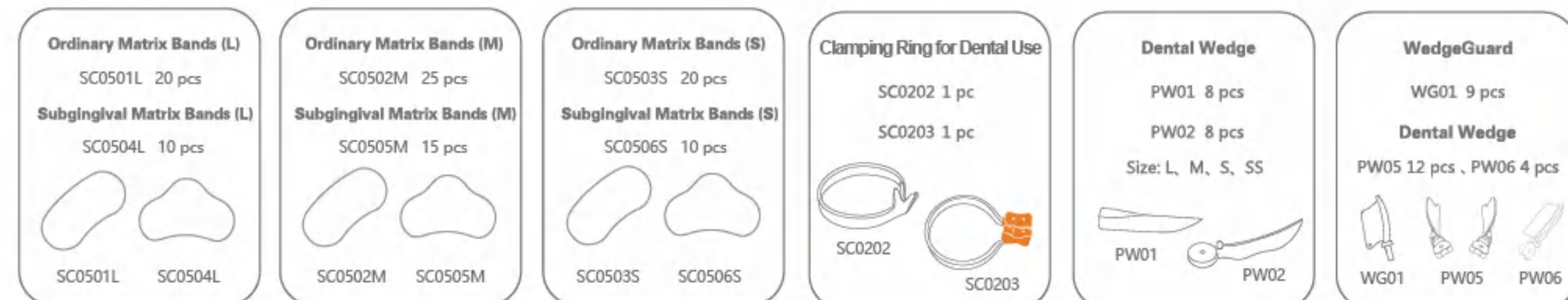
Dental Sectional Contoured Matrices Kits



Item: SC0103
Name: Dental Sectional Contoured Matrices Kits
Packing: 1 set/box,100 boxes/ctn
Carton Size: 420X270X230mm
Weight: 7 KGS



The Kit Contains:



Name: Dental Sectional Contoured Matrices Kits

Carton Size: 355X345X265mm

Packing: 1set/box,40 boxes/ctn

Weight:9 KGS

Matrix Bands:Thickness is 0.035mm

Matrix Bands:Thickness is 0.03mm

Matrix Bands:Thickness is 0.025mm



SC104

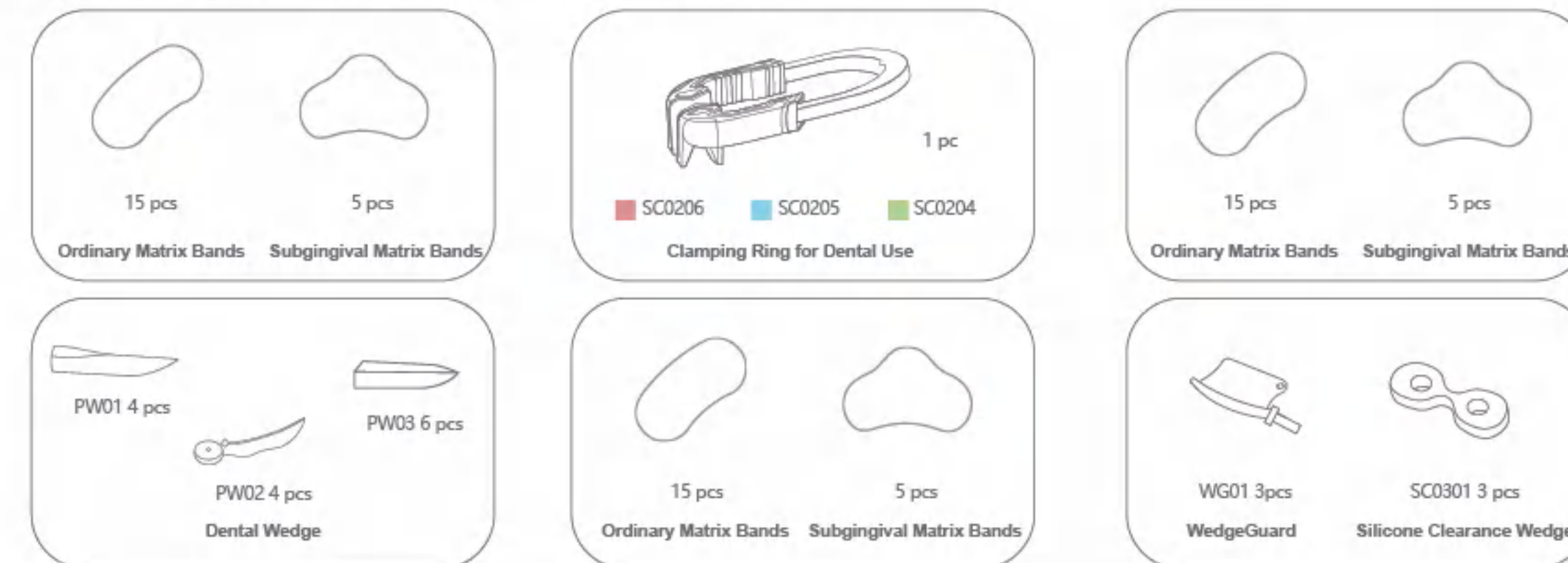


SC1002



SC1102

SC104 / SC1002 / SC1102 Contains:



Dental Sectional Contoured Matrices Kits



- The bow ring is made of high-elastic nickel-titanium alloy round wire, which has good shape memory effect, super elasticity, biocompatibility, corrosion resistance and fatigue resistance, gentle clamping force.
- The original mortise and tenon inlay structure of the soft and hard glue joint part increases the strength of the soft and hard glue joint;
- The soft glue part of the chuck is thickened, and it can fit various tooth shapes through elastic deformation;
- The contact part with the tooth body conforms to the anatomical shape of the tooth body, so that the forming piece above the adjacent point can also be closely combined with the tooth body, and the forming piece fits the tooth body better;
- The left and right chucks are preset at an angle. After being stretched, the left and right chucks are close to parallel, which can better transmit the clamping force of the bow ring and obtain a more stable clamping effect;
- The chuck angle is optimized, which is more suitable for the shape of the tooth neck and strengthens the clamping effect;

Regular: 2.0mm
 Fine: 1.5mm
 Superfine: 1.0mm
 Packing:1set/box,125boxes/ctn
 Item:SC18

Clamping Ring for Dental Use



- It consists of U-shaped alloy spring clips and plastic chucks.The materials used are titanium-nickel memory alloy and PC plastic,which are super-elastic,memory, corrosion-resistant and biocompatible.The clamping force is weak,medium and strong respectively.

Advantage:

- U-shaped memory alloy clamping ring to ensure the strength of the ring;
- Soft and hard plastic clamping heads,play a anti-slip effect;
- Head covered with transparent material,which does not affect light curing restoration;
- The design of the V-shaped clamping head can fix the two ends of the interdental space and make full contact with the wedge for more accurate positioning.

Red (Strong) ■ Blue (Medium) ■ Green (Weak) ■

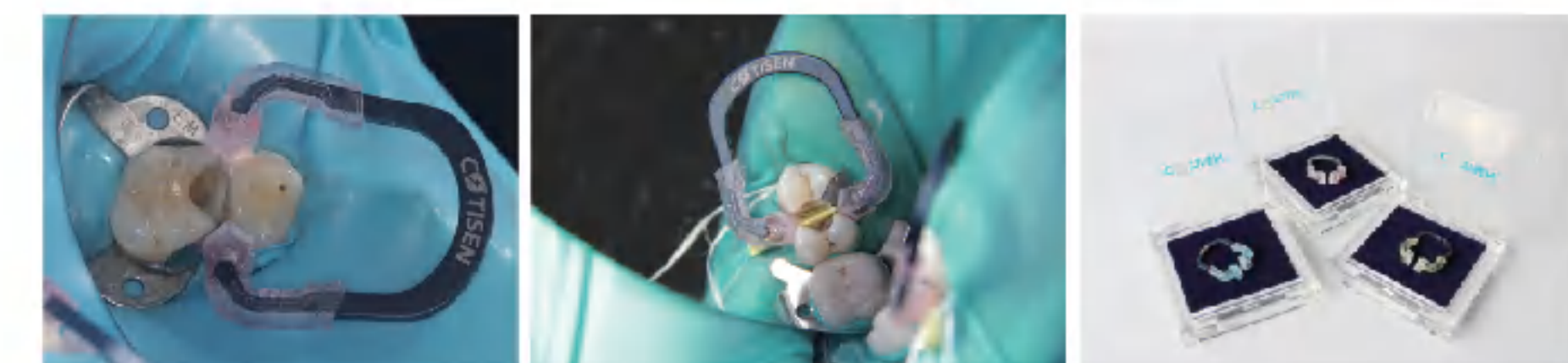
Item: SC0204/SC0205/SC0206

Specification: 25.5X22mm

Packing: 1 pc/box,30 boxes/ctn

Carton Size: 210X150X140mm

Weight:2.5KGS





Clamping Ring for Dental Use



- The concave type design of the silicone pads conforms with the anatomy of the tooth adjacent surface, closely fixed on the matrix bands on it, make the adjacency relations back to normal. The silicone pads circle, vertical circle and triangle all of them can be used to fix the bands.

SC0401 Silicone pad



Packing: 50 pcs/box

Item: SC0201/SC0202/SC0203

Packing: 6 pcs/box, 10 boxes/bag, 24 bags/ctn

Carton Size: 360X360X280mm

Weight: 9 KGS



Clamping Ring for Dental Use



- Product Features: produced by High elastic titanium-nickel alloy round wire, which are memory, super-elastic, biocompatible, corrosion-resistant and fatigue resistance, soft clamping force, stable performance, not easy to break

Packing: 1pc/box, 30boxes/ctn

Orange

Item: SC0207

- "8" appearance, hollow design, Super elasticity, can be easily put into any diastema. It is used to fix the resin matrix bands, suitable for repairing the smaller cavity of anterior teeth.

- The hardness is 30HA

Item: SC0301

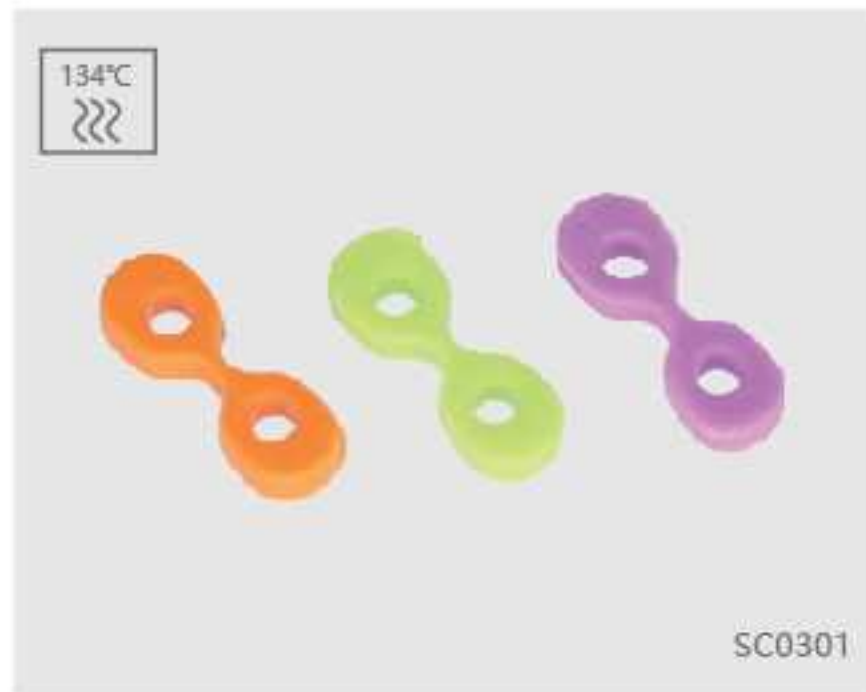
Packing: 20pcs/box, 10 boxes/bag, 24bags/ctn

Carton Size: 360X360X280mm

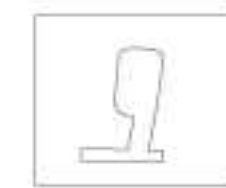
Weight: 7.5KGS



Silicone Clearance Wedge



- Made of transparent material, without affecting of the resin curing, easily of operation.



SC0601L / SC0602S

Item: SC0601L/SC0602S

Packing: 50pcs/box, 10 boxes/bag, 24bags/ctn

Carton Size: 360X360X280mm

Weight: 7KGS



Resin Matrix Bands



Matrix Bands



- Anti-Stick Type: It's coated with Teflon non-stick material, which can prevent the matrix band from sticking to resin material during dental restoration, and make the filling resin surface smoother and reduce the adhesion of plaque.

- Size for Anti-Stick Type: large purple, medium orange, small green.

- Thickness is 0.03mm

Packing: 50pcs/box, 160 boxes/ctn

Weight: 9.5KGS

Carton Size: 280X280X220mm



Matrix Bands



- Halves bean appearance, smooth surface, convenient operation. Concave type design ordinary matrix band and subgingival matrix bands make it easy to recover to the normal adjacency relations.

- Thickness is 0.035mm, while maintaining strength, it can be applied to more adjacent spaces of teeth.

Ordinary Matrix Bands



Subgingival Matrix Bands



Packing: 50 pcs/box, 10 boxes/bag, 24 bags/ctn

Carton Size: 360X360X280mm

Weight: 7.5 KGS

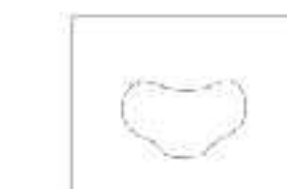


Matrix Bands



- Compared with ordinary matrix band, new gingival matrix band reduces the formation of overhang at the gingival margin during dental restoration.

- Compared with subgingival matrix band, it protects gingival from over damage when put into any diastema.



Thickness: 0.04mm

Packing: 50 pcs/box, 160 boxes/ctn

Carton Size: 280X280X220mm

Weight: 11.2 KGS



Matrix Bands



- Halves bean appearance, smooth surface, convenient operation. Concave type design ordinary matrix bands and subgingival matrix bands make it easy to recover to the normal adjacency relations.

- Thickness is 0.025mm, while maintaining strength, it can be applied to more adjacent spaces of teeth.

Packing: 50 pcs/box, 160 boxes/ctn

Carton Size: 280X280X220mm

Weight: 9.5 KGS



Resin Matrix Bands



- The product is made of polyester film, which can restore the defect tooth shape well. Secured with poly wedge, the matrix bands can fix tooth cervical firmly, reduce overhang to gum, and restore proximal contact point.

Item: SC09

Specification: 25X10X0.075mm 100pcs / 100X10X0.075mm 20pcs

25X10X0.05mm 100pcs / 100X10X0.05mm 20pcs

Packing: 1 set/box, 60 boxes/ctn

Carton Size: 360X170X280mm

Weight: 8 KGS



Matrix Band (Resin V-type)



- Can be used as a substitute for wedge floss and other materials such as dental wedges

- Isolate and protect adjacent teeth during sandblasting, acid etching and bonding repair

- Fill the gap during treatment to make the forming piece fit better with the tooth

Specification: 12mmx0.1mmx10000mm

Packing: 1 pc/box





Forceps



- High-quality texture, non-slip, it is better to use with COTISEN Clamping Ring
- A reusable product can be sterilized at high temperature and pressure at 134°C after use.

Item: SC0702
Packing: 1 pc/box, 50 boxes/ctn
Carton Size: 280X280X220mm
Weight: 6.5 KGS



SC0702

Forceps



- "8" smooth design forceps clamps, make the circles easily open or place. The plastic sleeve design, not easy to slip, good hand feeling.

Item: SC0701
Packing: 1 pc/box, 50 boxes/ctn
Carton Size: 280X280X220mm
Weight: 4.6 KGS



SC0701

Adhesive Tip Applicator



- Used to stick small device like ceramic veneer, inlay and Orthodontic bracket, special made glue tip with strong stick force but not remains left over, well-designed, convenient to use to avoid getting slipped from the forceps.

Item: SC08
Packing: 20 pcs/box, 120 boxes/ctn
Carton Size: 440X440X250mm
Weight: 6 KGS



SC08

Adhesive Tip Applicator



- Used to take small device like veneer, inlay and dental crown.

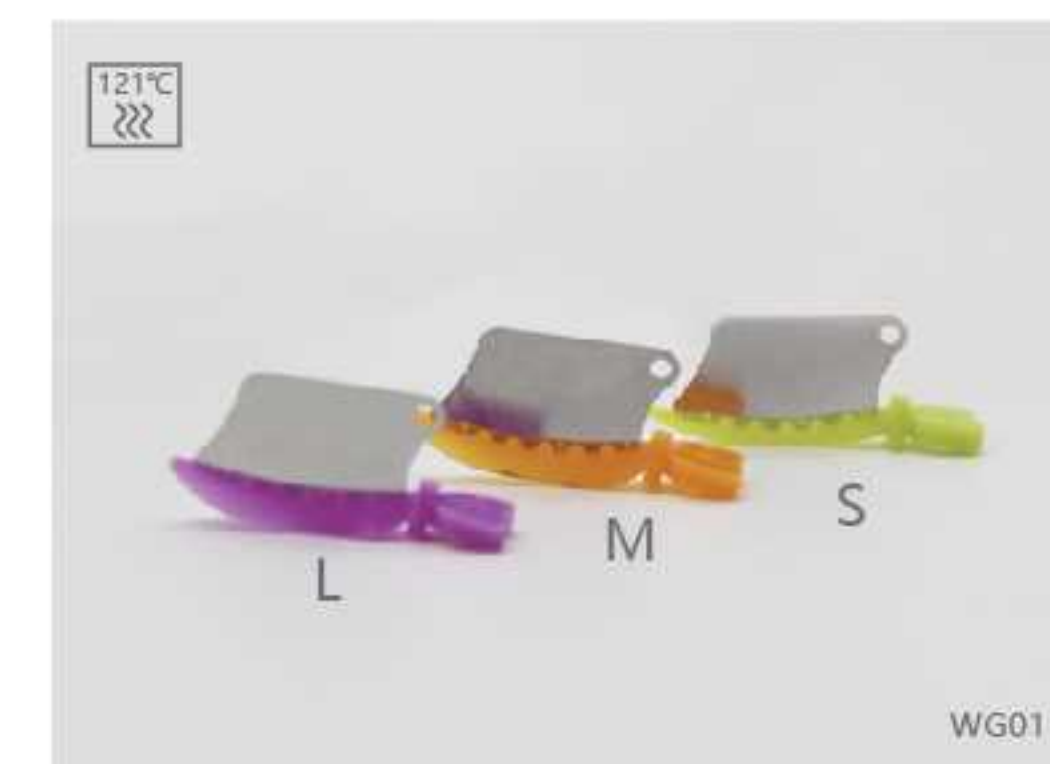
Item: SC08B
Packing: 30 pcs/box, 200 boxes/ctn
Carton Size: 450X230X405mm
Weight: 7.95 KGS



SC08B

WedgeGuard

Patent Number: ZL 2017 2 1625810.1



- According to the size of adjacent gap, select the appropriate WedgeGuard and insert with forceps or handle from the buccal or lingual side between the desired preparation teeth and adjacent teeth. Then adjust the position to fit the tooth better. Later, the tooth preparation can be performed.

Item: WG01
Packing: 50 pcs/box, 160 boxes/ctn
Carton Size: 280X280X220mm
Weight: 11.2 KGS

Item No	Color	A(±0.1mm)	B(±0.1mm)	C(±0.1mm)	Thickness
WG01L	Light Purple	2.8 mm	1.9 mm	2.4 mm	0.06 mm
WG01M	Light Orange	2.0 mm	1.3 mm	1.7 mm	0.06 mm
WG01S	Light Green	1.9 mm	0.9 mm	1.4 mm	0.06 mm

Dental Wedge

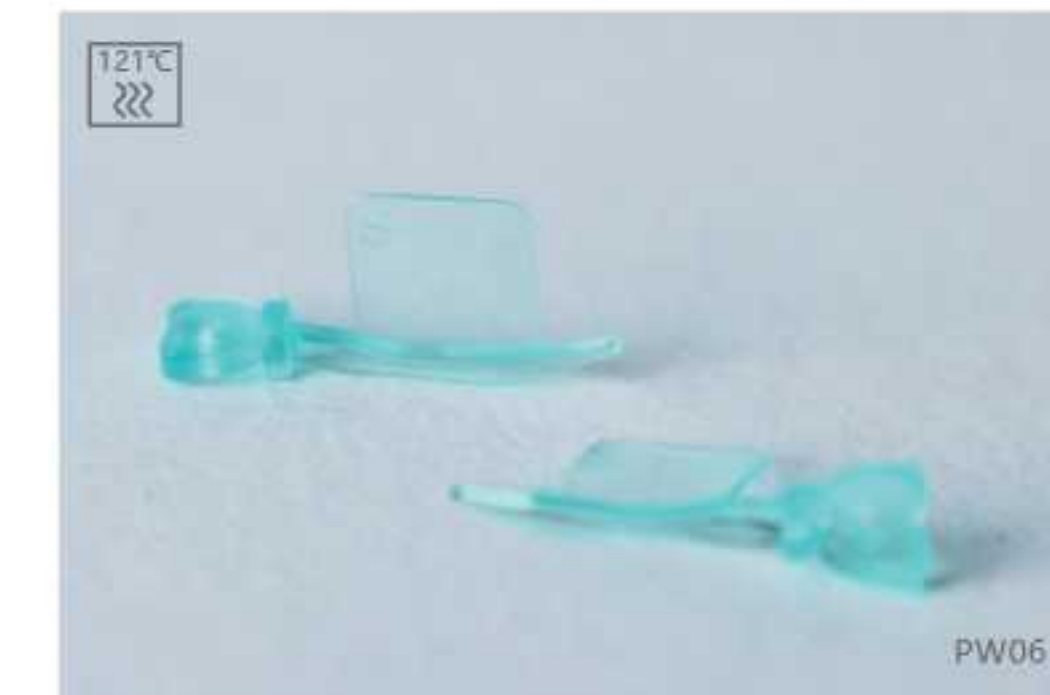


- This product is composed of Wedges and Matrix Bands, which can not be separated. The product is made of transparent plastic, which is convenient for curing and forming by light curing machine after filling with resin. It can effectively shorten the curing time and achieve excellent molding effect. The Dental Wedge with Matrix is designed to touch the patient's dental papilla in a rounded way. The outside design can effectively prevent slip, and feel good. The operation is convenient and quick. This product is an important auxiliary tool for the dentist in the key process of repair and healing.

Item: PW05
Packing: 50(L+R) pcs/box, 100 boxes/ctn
Carton Size: 290X260X230mm

Contoured Type:

Item No	Specification	Color
PW05L(L/R)	19.5x6.7mm	Blue, Clear
PW05M(L/R)	17.6x6.8mm	
PW05S(L/R)	15.6x6.8mm	



Item: PW06
Packing: 50(L+S) pcs/box, 100 boxes/ctn
Carton Size: 290X260X230mm

Flat Type:

Item No	Specification	Color
PW06L	17.7x8.8mm	Blue, Clear
PW06S	17.7x8.2mm	

Dental Wedge



- The part in contact with the soft tissue and tooth neck is silicone, which can reduce the pressure and injury of the wedge to the gingival papilla.
- The main body is made of transparent material, which has a low resistance to light curing lamps. When a resin matrix band is used, a better curing effect can be obtained.

Item No	Color	Specification
PW07L	Purple	17.5*2.1*2mm
PW07M	Orange	16.8*1.7*1.9mm
PW07S	Green	16.4*1.7*1.6mm

Item: PW07
Packing: 50 pcs/box, 160 boxes/ctn
Carton Size: 280X280X220mm
Weight: 10KGS



Dental Wedge



The design of the round tip protect gingival from damage,the square tail is very convenient to hold .

Item: PW01
 Packing: 100 pcs/bottle,16 bottles/box,36boxes/ctn
 Carton Size: 430X430X290mm
 Weight: (L,M)12 KGS,(S,SS)10 KGS

Item No	Color	Specification
PW01L	Purple	16X2 . 6X2 . 2mm
PW01M	Yellow	14X2 . 2X2mm
PW01S	Green	12X1 . 9X1 . 9mm
PW01SS	Blue	10X1 . 6X1 . 5mm



Dental Wedge



Plastic wedge,round stem with a hole,easily of being taken,round edge with unattached,make the wedge more flexibility to be full filled in different teeth cracks .

Item: PW02
 Packing: 100 pcs/bottle,16 bottles/box,36boxes/ctn
 Carton Size: 430X430X290mm
 Weight: (L,M)11 KGS,(S,SS)9 KGS

Item No	Color	Specification
PW02L	Purple	17 . 8X2 . 8mm
PW02M	Yellow	17 . 8X2 . 45mm
PW02S	Green	17 . 8X2 . 1mm
PW02SS	Blue	17 . 8X1 . 7mm



Dental Wedge



Eco-friendly wooden wedge,round tips protect gingival from damage,smooth round edge, square stem.Six different sizes fits for different requirements .

Item: PW03
 Packing: 100 pcs/bottle,16 bottles/box,36boxes/ctn
 Carton Size: 430X430X290mm
 Weight: 9-11 KGS

Color	L(±0.5mm)	X(±0.1mm)	Y(±0.1mm)	H(±0.5mm)
Orange	11mm	3.5mm	1.5mm	1.3mm
White	14mm	4mm	1.5mm	1.5mm
Green	14mm	2mm	1.5mm	1.5mm
Blue	14mm	4mm	2mm	1.5mm
Yellow	16mm	4mm	1.5mm	1.5mm
Pink	16mm	4.5mm	2mm	1.5mm



Dental Wedge



Long handle plastic wedge,integrated design,just break off the long handle lightly when the wedge is in place .

Item: PW04
 Packing: 100 pcs/bag,100 bags/ctn
 Carton Size: 290X260X230mm
 Weight: (L)6 KGS,(M)5.9 KGS,(S)5.8 KGS

Item No	Color	Specification
PW04L	Orange	81X2 . 7mm
PW04M	Blue	80X2 . 6mm
PW04S	Yellow	75X2 . 1mm



Dental Dam Kit

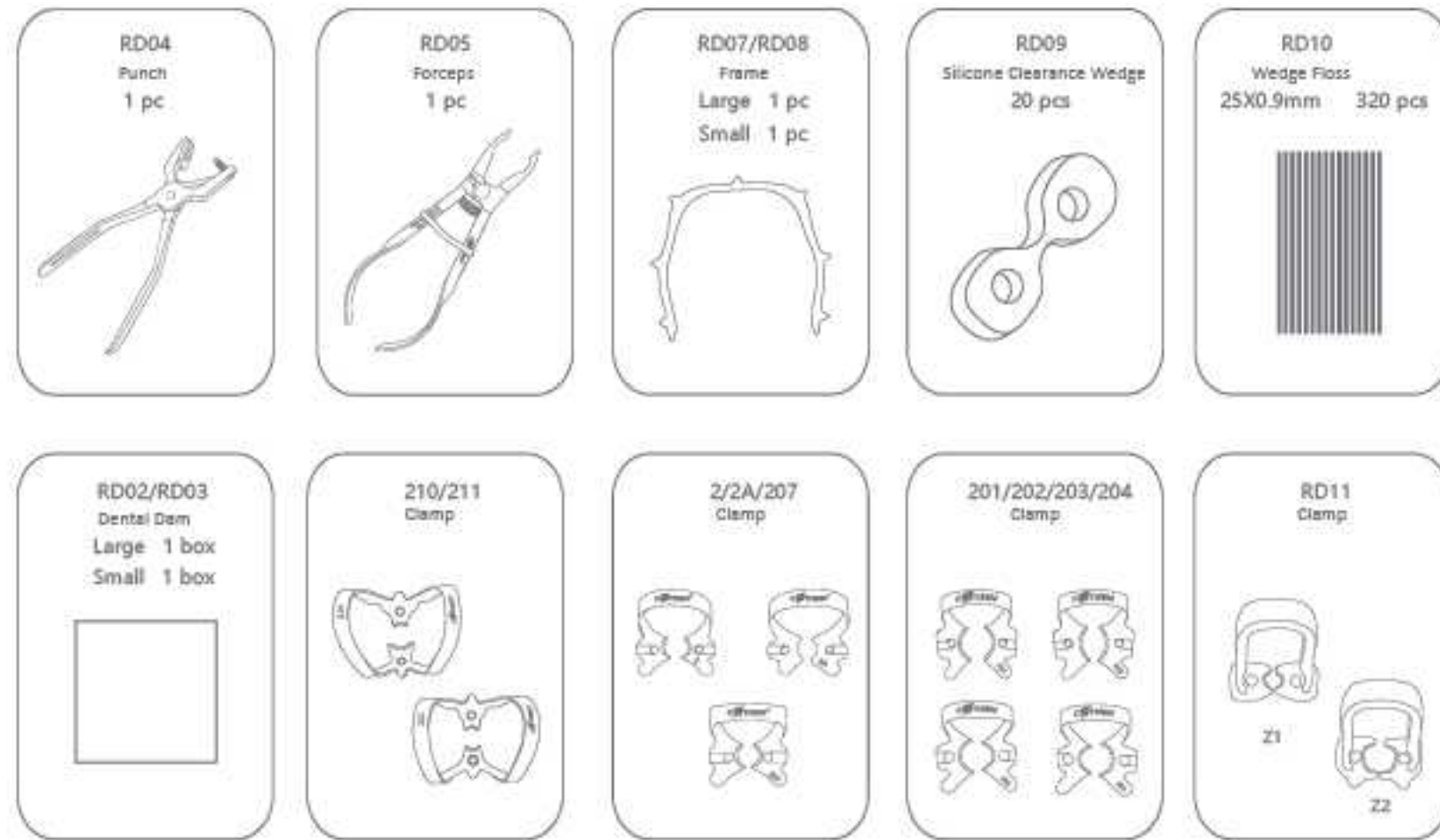


Dental Dam Kit



Item: RD01
 Name: Dental Dam Kit
 Packing: 1set/box,5boxes/ctn
 Carton Size: 450X270X305mm
 Weight: 7.9KGS

The Kit Contains:



Advantage:

- Prevent instruments and materials from being inhaled, swallowed or damaging the mouth.
- Keep the operative field clean and dry, reach better performance of bonding materials.
- Isolate bacteria in saliva from splashing onto the tooth to avoid cross infection.
- Block lips and tongue for easy operation.
- Protect soft tissues and avoid injury from instruments and irritating flushing fluid.
- Improved visibility of the operative site.
- Avoid the noise of the suction device.
- Save operation time, and improve treatment efficiency.

Punch



- The punch head is combined with a spring and a tapered structure, which can be automatically adjusted to ensure the taper head is aligned with the center of the cutting edge when drilling.
- Hole diameter size: 0.8/1.0/1.4/1.6/1.8/2.0/2.3.

Item: RD04
 Packing: 1 pc/box



Forceps

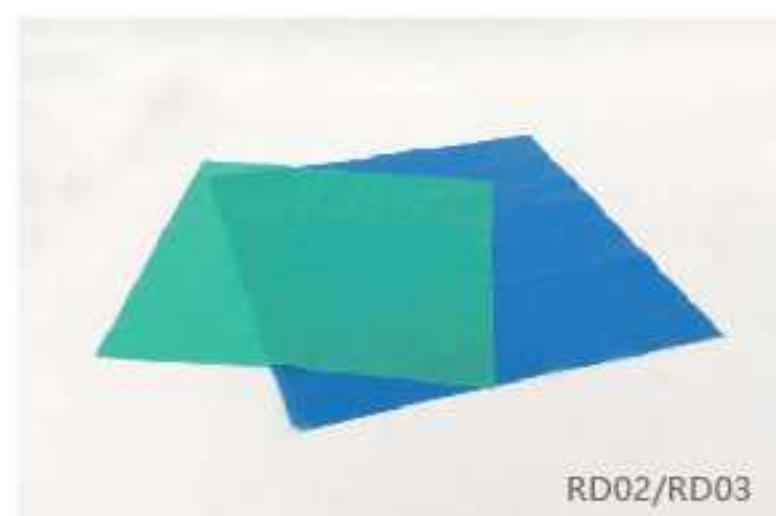


- The forceps head with anti-slipping design, can prevent it from slipping when stretching the clamps.
- The right side of forceps is printed with positioning line. It can prevent extra stretching during operation, which will reduce resilience of clamps.
- Serrated design, accurate positioning, single hand operation, easy gripping.

Item: RD05
 Packing: 1 pc/box



Dental Dam



Malaysia imported latex, high tear tolerance, good flexibility.
 Blue: 6X6", Green: 5X5"
 Item: RD02/RD03
 Specification: (RD02)6X6" ,152X152mm Blue (RD03)5X5" ,127X127mm Green
 Packing: (RD02)36pcs/box,40boxes/ctn (RD03)52pcs/box,40boxes/ctn
 Carton Size: (RD02)360X360X150mm (RD03)300X300X200mm
 Weight:(RD02)7.9KGS (RD03)7.7KGS

Blue
 Green



Silicone Clearance Wedge



- Silicone material, can do heat sterilization.
- Can fix rubber dam. Open the silicone clearance wedge with forceps and place it into gum gap, when the mouth area is not large and the operating space is limited.

The hardness is 20HA

Item: RD09
 Packing: 6pcs/box,10 boxes/bag,24bags/ctn
 Carton Size: 360X360X280mm
 Weight:7.5KGS

Orange
 Green
 Purple



Wedge Floss



- The wedge floss is with latex material and row design, the dentists can take appropriate quantity according to patients' gum gap.
- Excellent elasticity, in many cases, it can be used as a substitute for traditional clamps, which can quickly and easily fix the rubber dam.

Item: RD10
 Packing: 6pcs/box,10 boxes/bag,24bags/ctn
 Carton Size: 360X360X280mm
 Weight:5.5KGS

Gray



Frame



- The effect of lifting the upper tooth position of the dental dam is better than that of the traditional U-shaped frame, and there is no need to reverse the frame during the treatment of the front teeth, so as to avoid the discomfort caused to the patient due to the frame rotation.

Item: RD13
 Packing: 1 pc/box,66boxes/ctn

Black



Clamp



- Small size resin clamps for adult premolar large size for adult molar.

Item: RD11
 Packing: (Z1+Z2)1set/box,10boxes/bag,24bags/ctn
 Carton Size: 360X360X280mm
 Weight:5.5KGS



Clamp



- The RD44 clamp can be reused after 134°C high temperature and high pressure disinfection.
- The matte surface design increases the texture and reduces light reflection effectively

Item: RD44
 Packing: 1 pc/bag,50bags/bag



Clamp

- The groove design of the clamp is convenient for the instrument to enter the groove and place the rubber dam. The two-wing design of the clamp fits firmly with the teeth. Using special material, the clamping force is stronger, and the matte surface design increases the texture of the product.



210/211



2/2A/207



201/202/203/204



Z1/Z2



210/211 Anterior



2/2A/207 Premolar



201/202/203/204 Molar



RD06



Dental Retractor

Dental Retractor



■ CR10S, rubber-coated dental retractor, the part where the retractor contacts the patient's mouth corners is coated with silicone, and the silicone material is more skin-friendly and comfortable. During oral treatment, the dental retractor can open the mouth and maintain a certain degree of opening. It is an auxiliary tool for dentists in the treatment process.

■ This product is reusable and can be sterilized at 134°C.

Item : CR10S
Specification: 100×72×18mm
Packing: 2 pcs/bag, 100 bags/ctn
Carton Size: 520X350X370mm
Weight: 9KGS

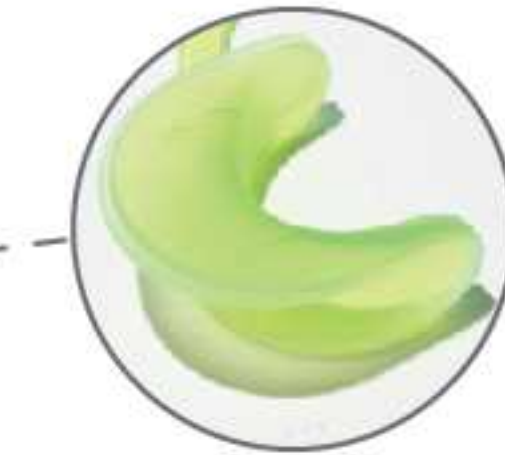
Product Advantages:



■ The material is safe and resistant to high temperature, high stability and not easy to deform.



■ Prevent scratching of oral mucosa.



■ The dental retractor touches the corners of the patient's mouth on both sides, and the protective design is made of silicone material to make the patient more comfortable during treatment.

Dental Retractor



■ The parts of the retractor in contact with the two sides of the mouth of the patient use soft rubber to make protective design, which makes the patient more comfortable to use.

■ The outer side of the connecting rod also adopts soft rubber packaging design, nonslip and feel good.

Item : CR10M
Specification: 118×85×21mm
Packing: 2 pcs/box, 100 boxes/ctn
Carton Size: 460X350X260mm
Weight: 5KGS



Dental Retractor



■ Rubber-coated design where the dental retractor touches the patient's mouth on both sides can prevent patients from scratching their mouth when wearing and improve the comfort level of treatment.

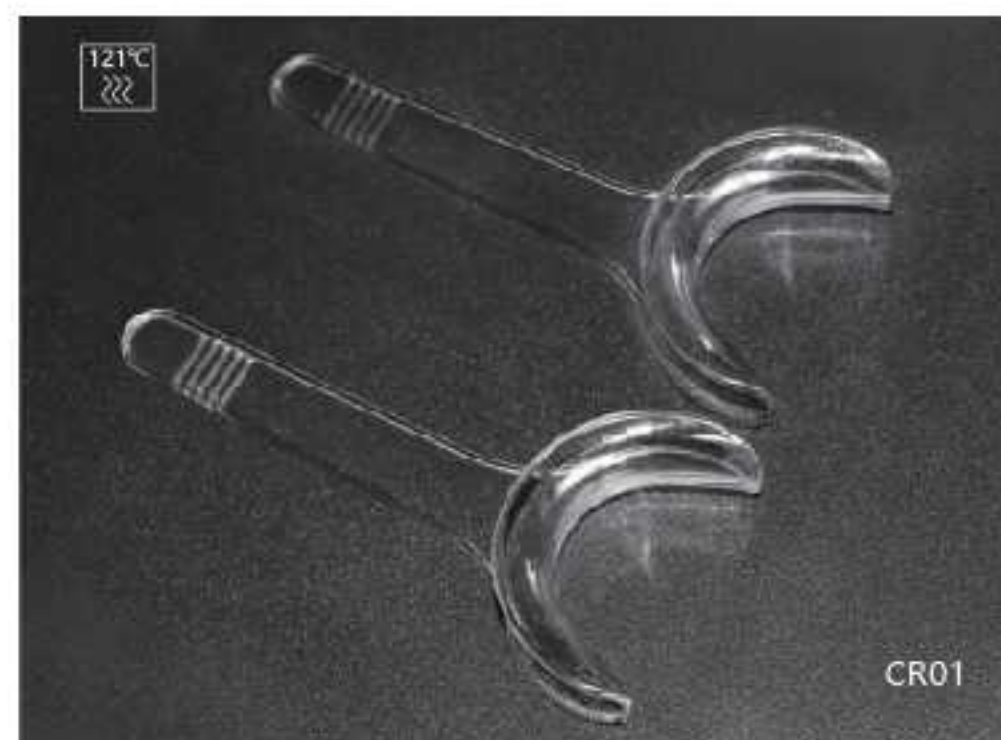
■ This product is reusable and can be sterilized at 121°C.

Item : CR11S
Specification: 66.5×91.5×32.7mm
Packing: 2 pcs/box, 100 boxes/ctn
Carton Size: 420X275X235mm
Weight: 2 pcs/box, 100 boxes/ctn





Dental Retractor



This product consists of a semilunar retractor and a handle. During oral treatment, the medical staff can place the retractor on one side of the mouth corner of the patient and gently pull the open lip to provide a clear surgical field vision.

Type: T type

Color: Clear

Item No	Specification	Carton Size	Packing	Weight
CR01L	120X53.5X18mm	430X330X320mm	2 pcs/box, 200 boxes/ctn	6.3 KGS
CR01S	114X42X17mm	360X360X280mm		5.8 KGS



Dental Retractor



This product is composed of C-shaped connecting rod and retractor on both sides. The material has good strength and toughness. During oral treatment, put it at the corner of both sides of the patient, open the mouth and make it keep a certain degree of opening.

Type: C type Color: Clear

Item No	Specification	Carton Size	Packing	Weight
CR02L	132X90X17mm	500X360X440mm	2 pcs/box, 200 boxes/ctn	8.2 KGS
CR02M	118X85X17mm			8 KGS
CR02S	97X70X15mm	430X335X290mm		5.5 KGS



Dental Retractor



This product is M type design. In oral treatment, medical staff can place it in both sides of the mouth position separately to open the mouth, block the tongue, and provide a clear surgical field vision.

Type: M type Color: Clear

Item No	Specification	Carton Size	Packing	Weight
CR03L	126X57X51mm	420X420X470mm	2 pcs/box, 147 boxes/ctn	6 KGS
CR03M	106X48X54mm		2 pcs/box, 246 boxes/ctn	8.6 KGS
CR03S	100X44X40mm		2 pcs/box, 246 boxes/ctn	7.5 KGS



Dental Retractor



This product is a circular and hollow design. In oral treatment, medical staff can place it on both sides of the patient's mouth to open the oral vestibule and provide a clear surgical vision.

Type: O type

Color: Clear

Item No	Specification	Carton Size	Packing	Weight
CR04L	84X80X22mm	440X440X250mm	10 pcs/bag, 100 bags/ctn	6.5 KGS
CR04S	70X68X35mm			6.2 KGS



Dental Retractor



This product is composed of double-headed semilunar retractor and handle are formed.

Type: Double head

Color: Clear

Item No	Specification	Carton Size	Packing	Weight
CR05L	167X55X24mm	400X400X370mm	2 pcs/box, 120 boxes/ctn	7.7 KGS
CR05S	145X45X20mm	400X400X370mm	2 pcs/box, 147 boxes/ctn	5.9 KGS



Dental Retractor



It consists of C-shaped connecting rod and retractor on both sides. After special processing, the surface is white translucent, smooth, high strength and good toughness.

Remark: Frosted Surface

Item No	Specification	Carton Size	Packing	Weight
CR09L	132X90X17mm	690X415X320mm	2 pcs/set, 10 sets/box, 20 boxes/ctn	12KGS
CR09M	118X85X17mm	690X415X320mm		11.5KGS
CR09S	97X70X15mm	625X315X265mm		8KGS



Dental Retractor



Item: CR06/CR07

Packing: 1 pc/bag, 25 bags/box
500 boxes/ctn

Carton Size: 440X440X250mm

Weight: CR06 7.7 KGS
CR07 11.5 KGS

Color: Clear



Mouth Prop

Patent Number: ZL 2015 3 0162734.5



Easily avoiding patients fatigue by using mouth prop, make patients enjoy a relaxing treatment.




Item: MP01

Packing: 2 pcs/bag, 12 bags/box, 32 boxes/ctn

Carton Size: 440X440X250mm

Weight: (L)13 KGS, (M)9.5 KGS, (S)7.7 KGS

Item No	Specification
MP01L	39.5X39.5X20.4mm
MP01M	34.5X36.5X17mm
MP01S	33X28X17mm

Purple (L) 
Green (M) 
Yellow (S) 





Mouth Prop & Tongue Guard



MP02

- Tongue guard block tongue moving so that no injury would happen during the whole treatment.

Item: MP02
 Packing: 12 sets/box, 20 boxes/ctn
 Carton Size: 540X400X490mm
 Weight: (L)11.5 KGS, (M)10.5 KGS, (S)9.5 KGS

- Purple (L)
- Green (M)
- Yellow (S)



Dry Field System Tubing



CR08

- The Dry Field System completely eliminates saliva and fully exposes both arches making it ideal for all bonding applications. The system is easy to assemble and be inserted and used by a single operator.

Set salivary absorption, retractor, tongue guard in one.
 Item: CR08
 Packing: (L)1 set/box, 48 boxes/ctn, (S)1 set/box, 50 boxes/ctn
 Carton Size: (L)440X440X250mm, (S)460X350X260mm
 Weight: (L)5.8 KGS, (S)5 KGS

- White (L)
- Green (S)



Dry Field System Tubing Component



CR0802

Item: CR0802
 Packing: 1 set/box
 Remark: Components consist tongue guard, connection arm, position block, 2 pcs of silicone tubing and Y-connector.

Aligner Chewies



MP03

- Mint flavor
- Grape flavor
- Lemon flavor
- Juicy peach flavor
- Green apple flavor
- Watermelon flavor

- Help aligner tray fit teeth closer to make sure reach preset orthodontics force.
- Bite for 5-10 minutes to avoid braces face.
- Gum bite and handle are designed separately, convenience and hygiene.
- Triangular prism shape uses wedge-force principle to fit aligner tray for adjacent anterior or premolar region.
- Cylinder is used to fit aligner tray in molar region with greater occlusal force, and it can also be used to exercise bite muscle.
- Elliptic cylinder is mainly used to fit aligner tray in occlusal surface of posterior teeth.



Item: MP03

	Box	Bag
Packing 1	3 pcs/box, 400 boxes/ctn	2 pcs/pouch, 12 pouches/bag, 30 bags/ctn
Packing 2	2 pcs/box, 400 boxes/ctn	3 pcs/pouch, 12 pouches/bag, 30 bags/ctn

Retainer Retrievers



MP04

- Red
- Green
- Orange
- Blue
- Yellow
- Rose

- Retainer retrievers help patients remove appliances cleanly and efficiently.
- Helps patients remove appliances from the buccal side cleanly and efficiently.
- The ring handle is easy to hold by hand when operating.
- This handy tool features specially designed hooks which help to remove clear retainers or aligners with ease.

Item: MP04
 Packing: 1 pc/unit, 12 units/bag, 30 bags/ctn
 Carton Size: 290X260X230mm
 Weight: 2.1 KGS



Invisible Braces Box



DB21

- New high-quality materials not only have good aging resistance, ruggedness and durability, but also have a good texture. The lenses are separated from the braces layer by layer, and the dry and wet are separated to avoid stains.
- Put the aligner chewies and the retainer retriever into their fixed positions respectively, and use the upper plane mirror or the middle layer magnifying mirror when wearing the invisible aligners, extracting and using the orthodontic aligner chewies.

- Cyan
- Yellow
- Light blue
- Green
- Orange
- Blue
- Rose Red

Item: DB21
 Packing: 1 pc/box, 108 boxes/ctn
 Carton Size: 420X275X235mm
 Weight: 11 KGS





Micro Applicator

Micro Applicator



- Shaping: After the resin is filled into the teeth, the brush can be used to shape the resin material so that it better fits the shape of the teeth and the shape of the occlusal surface;
- Polishing: After the restoration is completed, the brush can also be used to polish the resin surface to make it smooth, improve the beauty of the teeth and reduce the adhesion of plaque;
- Cleaning: During the resin restoration process, the brush can be used to clean the tooth surface, remove residual resin or other debris, and ensure the cleanliness of the restoration area;
- Detail processing: The brush can help the dentist process the fine parts of the tooth surface, such as texture, edges and corners, to achieve a more natural restoration effect;
- Even coating: Before the resin restoration, the brush can be used to evenly apply the adhesive or acid etchant to ensure that the tooth surface is evenly treated and help the resin bond.

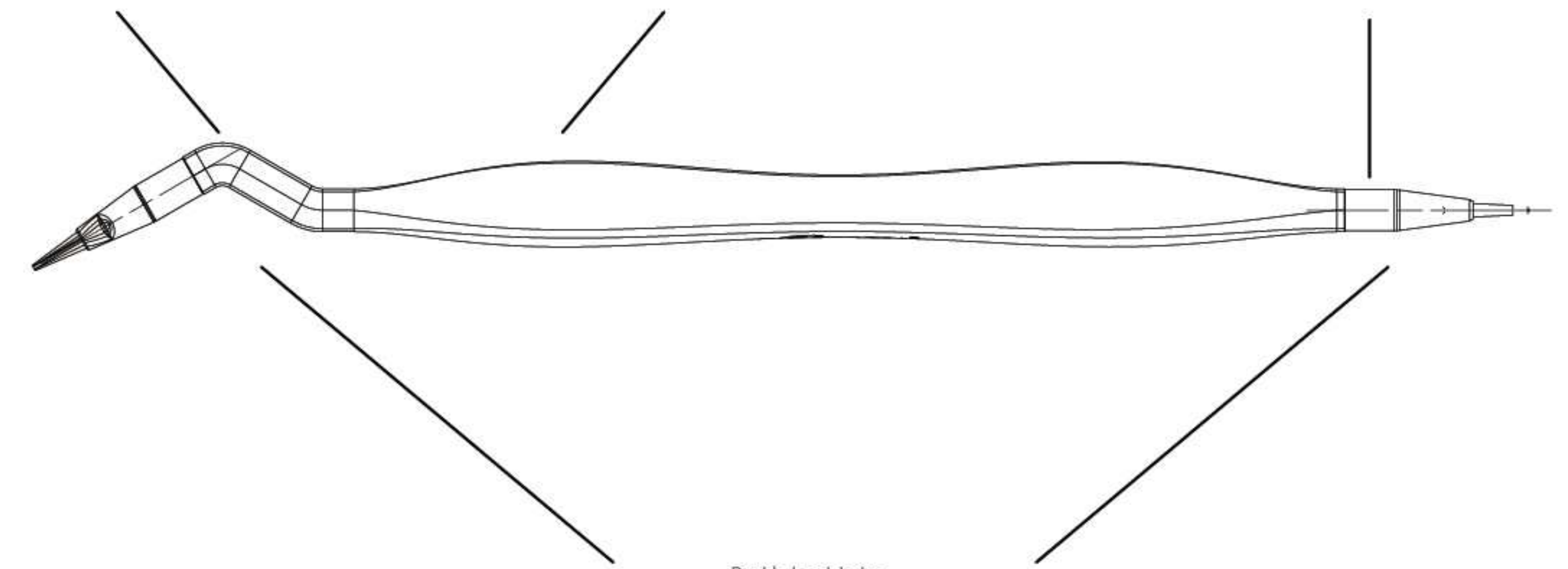
Packing: 1 set/box, 80 boxes/ctn

DH02

Preset angles are suitable for a variety of treatment scenarios

The triangular handle is easy to pinch

The brush head is removable for easy replacement



Double-head design, one brush for two purposes

Schematic Diagram:

The straight head is used for the labial side of the anterior teeth

The elbow is used for the posterior teeth and maxillofacial operations





Micro Applicator



MA01

The angle of brush head can be adjusted as needed. It can be used to dip dental etching agent, binder, cavity liner, fluor protector, hemostatic, fossa sealant, ect. Ultrathin Micro applicator, unusual design, make it possible to coat the medicine on the parties of dental cavity.

- Regular(2.0mm): Pearl Green
- Fine(1.5mm): Pearl Purple
- Super fine(1.0mm): Pearl Orange
- Pearl Yellow
- Pearl White
- Pearl Blue

Item: MA01
 Specification: 50X112mm
 Packing: 100 pcs/keg, 4 kegs/box, 32boxes/ctn
 Carton Size: 440X440X250mm
 Weight: 13.7 KGS
 Length: 10cm



Micro Applicator



MA07

Item: MA07
 Specification: 146X71.2X92mm
 Packing: 1 set/box, 32 boxes/ctn
 Carton Size: 430X330X345mm
 Weight: 7.7 KGS



Micro Applicator



MA08

Item: MA08
 Specification: 253X153X53mm
 Packing: 1 set/box, 15 boxes/ctn
 Carton Size: 480X300X320mm
 Weight: 10.5 KGS



Gingival Brushes



BA01

It is mainly used to apply whitening gel, desensitizer, fluoride or other Gel-like liquid to achieve a uniform effect.
 The front of Long Hair Brush is designed as a groove. The shape and angle can be adjusted arbitrarily, which is convenient for doctors to operate.

Item: BA01
 Specification: 50X110mm
 Packing: 100 pcs/keg, 4 kegs/box, 32boxes/ctn
 Carton Size: 440X440X250mm
 Weight: 14 KGS
 Tip length: 9-10mm

- Blue
- Pink



Applicator Tip



AT01L

AT01S

Item: AT01
 Specification: (Stick)14X3.2mm
 (Brush)5,5-6mm, L, 8-9mm
 Packing: 100 pcs/bag, 500 bags/ctn
 Carton Size: 320X320X240mm
 Weight: 6.5 KGS

- White
- Black



Brush Holder



BH01

Item: BH01
 Specification: 142X13X6mm
 Packing: 50 pcs/bag, 30 bags/ctn
 Carton Size: 320X320X250mm
 Weight: 8.5 KGS

- White



Prophy Brush / Prophy Cup
Prophy Strip/Prophy Paste
Polishing Discs
Composite Polisher



This product is composed of a metal handle and a working end. The metal handle is connected with the dental handpiece, and the working end is the brush. It is used for polishing the tooth restoration, and also for cleaning and polishing the surface of the tooth to make the surface smooth and even. Non-sterile provision, single use.

Prophy Brush(hard/soft)



■ PB01A,prophy brush,cup-shaped,nylon,hard.
 ■ PB01B,prophy brush,cup-shaped,nylon,soft.

Item: PB01A/PB01B
 Specification: (Stick)22.8mm,(Brush head)5.5mm
 Weight: 19.4KGS

Packing: 100 pcs/box,100 boxes/ctn
 Carton Size: 400X225X290mm





Hard: Red Orange
 Yellow Purple
 White

Soft: Yellow Green
 Blue Purple
 Transparent

Prophy Brush(hard/soft)



■ PB02A,prophy brush,flat-shaped,nylon,hard.
 ■ PB02B,prophy brush,flat-shaped,nylon,soft.

Item: PB02A/PB02B
 Specification: (Stick)21.6mm,(Brush head)5.5mm
 Weight: 18.9KGS

Packing: 100 pcs/box,100 boxes/ctn
 Carton Size: 400X225X290mm





Hard: Red Orange
 Purple White

Soft: Yellow Green
 Blue Transparent

Prophy Brush(hard/soft)



■ PB03A,prophy brush,tapered-shaped,nylon,hard.
 ■ PB03B,prophy brush,tapered-shaped,nylon,soft.

Item: PB03A/PB03B
 Specification: (Stick)21.6mm,(Brush head)7.5mm
 Weight: 18.9KGS

Packing: 100 pcs/box,100 boxes/ctn
 Carton Size: 400X225X290mm





Hard: Orange Purple

Soft: Yellow Green


Prophy Brush(bristles)



■ PB01C,PB02C,PB03C,prophy brush,bristles.

Item: PB01C/ PB02C/ PB03C
 Specification: PB01C (Stick)22.8mm,(Brush head)5.5mm, PB02C (Stick)21.6mm,(Brush head)5.5mm
 PB03C(Stick)21.6mm, (Brush head)7.5mm
 Packing: 100 pcs/box,100 boxes/ctn
 Weight: 19.4KGS

Carton Size: 400X225X290mm



This product is composed of a metal stem and a silicone cup. The stem is made of nickel-plated brass, which is connected to the dental handpiece; the cup is made of silicone material. This product is non-sterile and does not contain grinding and polishing materials. The product is suitable for polishing, sanding and removing excess parts of restorations. It is also used for descaling and polishing the surface of teeth.

Prophy Cup(hard/soft)



■ PC01A/PC01B,6-web prophy cup.

Item: PC01A(Hard)/PC01B(Soft)
 Specification: (Stick)14.5mm,(Silicone head)8mm
 Weight:10.5KGS

Packing: 100 pcs/box,100 boxes/ctn
 Carton Size: 400X225X290mm





Hard: Red Orange Green

Soft: Yellow Cyan Purple

Prophy Cup(hard/soft)



■ PC02A/PC02B,umbrella shape prophy cup.

Item: PC02A(Hard)/PC02B(Soft)
 Specification: (Stick)14.5mm,(Silicone head)8mm
 Weight:10.5KGS

Packing: 100 pcs/box,100 boxes/ctn
 Carton Size: 400X225X290mm





Hard: Orange Green

Soft: Yellow Purple

Prophy Cup(hard/soft)



■ PC03A/PC03B,ribbed shape prophy cup.

Item: PC03A(Hard)/PC03B(Soft)
 Packing: 100 pcs/box,100 boxes/ctn
 Carton Size: 400X225X290mm
 Weight:10.5KGS





Hard: Orange Green

Soft: Yellow Purple

Prophy Cup(hard/soft)



■ PC04A/PC04B,8-web prophy cup.

Item: PC04A(Hard)/PC04B(Soft)
 Packing: 100 pcs/box,100 boxes/ctn
 Carton Size: 400X225X290mm
 Weight:10.5KGS





Hard: Red Orange Green

Soft: Yellow Cyan Purple



Prophy Strip



PS01

- PS01, Not easy to lose sand, after the special sand planting process
- There are two granularities, for a single strip, which is more convenient to use

Item: PS01 Packing: 50pcs/box, 40boxes/box, 20boxes/ctn
 Specification: 152mmX4mm Carton Size: 635X440X315mm

Purple-50µm Blue-30µm Green-20µm Pink-12µm

Polishing Discs



PS02

- The product is used to polish interproximal surface of anterior teeth, refine labial surface enamel and resin restoration.
- It is made of highly resilient material, and it will not deform in work process.
- Not easy to lose sand, after the special sand planting process.

Purple-14µm Blue-12µm Green-10µm Pink-8µm

Item: PS02
 Packing: 1set(40 pcs discs+2 metal handles)/box, 100boxes/ctn
 Carton Size: 400X225X290mm

Composite Polisher



PS03

- The product is suitable for removing resin or cement and polishing.
- Used to remove dental adhesive and polish, after removing Orthodontic bands and bracket.
- Polishing enamel after cleaning teeth.
- Removing stain on the surface of teeth.

Item: PS03/PS04/PS05
 Packing: 10pcs+1metal handle/box, 10boxes/bag, 24bags/ctn
 Carton Size: 420X300X340mm



PS04

PS05

The product is used in conjunction with handpiece. It consists of metal sodium and a silicone cup. The metal sodium is connected to the handpiece. The product is non-sterile and does not contain abrasive polishing materials. The brush head is made of silicone, and the stem is made of nickel-plated brass. The product is suitable for polishing, sanding and removing excess parts of restorations, or cleaning of implants. It is also used for descaling and polishing the tooth surface.

Prophy Paste



PC05F/PC05M

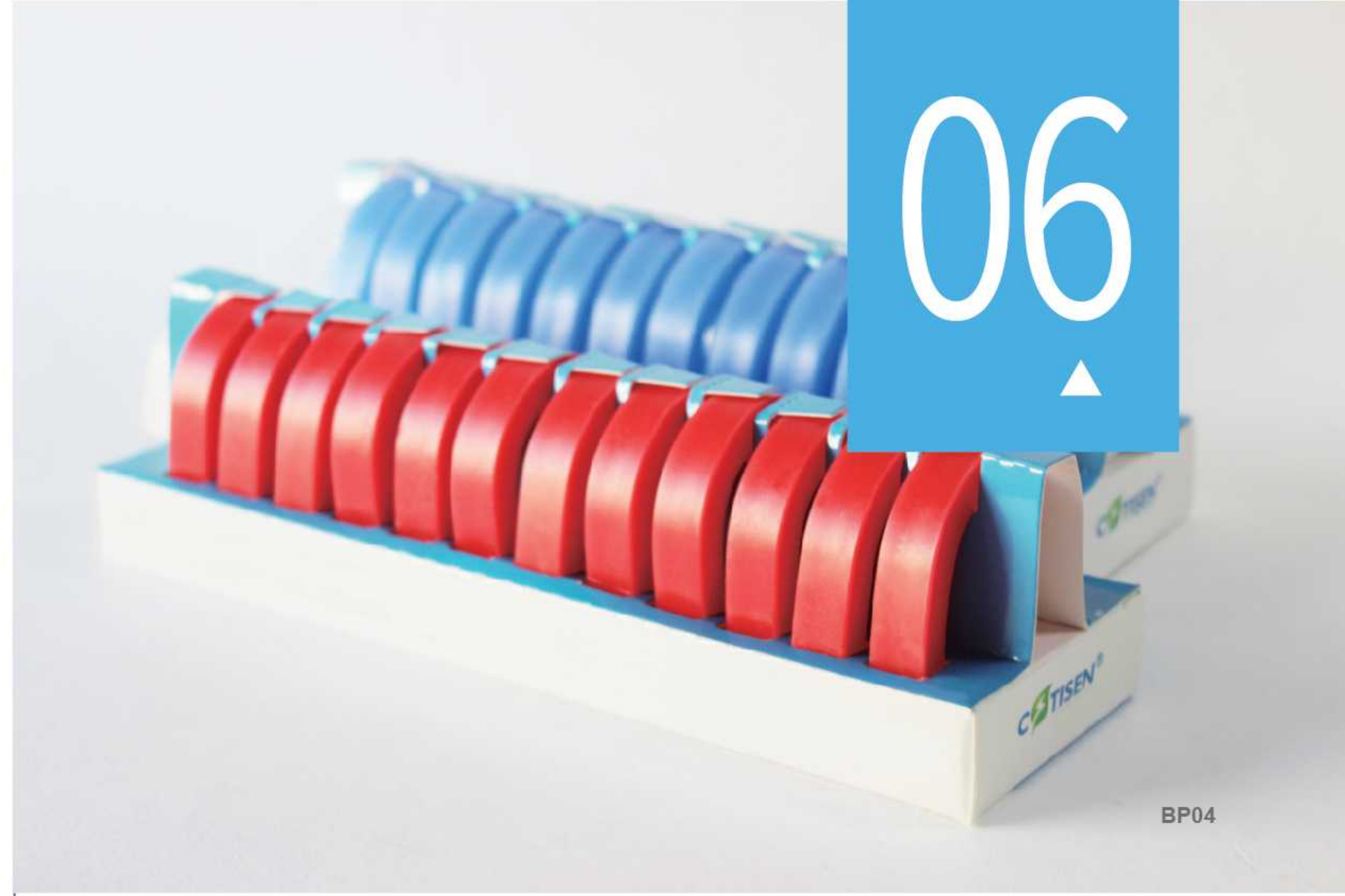
- Individual packaging is clean and hygienic.
- More Flavors, More Choices.
- Tooth shape design can be used by hand without a prophy paste ring.

PC05F Fine Grit
 ICE CREAM CINNAMON BLUEBERRY

PC05M Medium Grit
 CHERRY ORANGE MINT

Item: PC05F/PC05M
 Packing: (set) 1set/box, 50boxes/ctn,
 (box) 50pcs/box, 100 boxes/ctn
 Carton Size: (set) 420X300X340mm,
 (box) 420X300X340mm

06



BP04

Base Plate Wax



In clinical work, base materials are becoming more and more necessary for the repair of patients with complete edentulous jaws and free deletion. The traditional method of using self-coagulating plastics to directly pile up individual tray and temporary bases plate will lead to uneven thickness of self-coagulating resin, and it is difficult to grasp the thickness of self-coagulating resin. The edge should not reach the design position accurately, the operating time is short and the effect is not good.

Base Plate Wax



BP01, non handle base plate wax is a new product made of environmentally friendly plastic materials. It has good plasticity, uniform thickness, no need to mix, without odor, and easy to do operation. The product is suitable for dentist or technicians to make base plate, arrange teeth and form wax patterns.

Item: BP01
Specification: (Upper Jaw)95X65X2mm, (Lower Jaw)95X65X2mm
Packing: 10 for upper jaw and 10 for lower jaw/box, 20 boxes/ctn
Carton Size: 340X245X380mm
Weight: 7.4 KGS
Color: Blue



Steps for usage:



Make the first impression and finish the plaster model, fill the undercut with wax before making the temporary base;



Mark the base line to confirm the edge of the temporary base, and then apply the separating medium on the model;



Put the plaster model into soaking box and put the base plate on it, add 70-80°C hot water in the box. 1 minute later, the base plate can become transparent and adhere to the model, and then take out them;



Make the shaped, pay attention to making the edge of temporary base smooth;



Put the finished base plate and model into cold water together, and separate them when they are hard totally, and polish the edge to remove the sharp edge.

Base Plate Wax



BP02, With handle base plate wax is a new product made of environmentally friendly plastic materials. It has good plasticity, uniform thickness, no need to mix, without smell, and easy to do operation. The product is used for accurate impression of edentulous jaws.

Item: BP02
Specification: (Upper Jaw)95X94X3.5mm, (Lower Jaw)95X90X3.5mm, (Side Edge)86X22.5X3mm, (Anterior Teeth)62X59X3mm

Packing: 5 for upper jaw, 5 for lower jaw, 3 for anterior teeth, 2 for each side of mouth/box, 20 boxes/ctn

Carton Size: 340X245X380mm

Weight: 8.14 KGS

Steps for usage:



Put base plate wax into 70-80°C hot water. 1 minute later, the base plate can become transparent, and then take out them;



Make the shape on the model, pay attention to making the edge of base plate wax smooth;



Wait the base plate wax become to hard;



Remove the base plate from model and polish the edge to remove the sharp edge.



Rim Former for Dental Use



BP05, it is mainly used as a tool for dentists to fabricate upper and lower bite rims.

The overall shape of the shovel head is like a square circle, the edge of the working end is rolled up like a dustpan and the rolled-up part forms an obtuse angle with the shovel head flat;

The part below the triangular depression is closed up to hold excessive wax material;

Item: BP0501/BP0502
Packing: 1 pc/box, 100 boxes/ctn
Carton Size: 440X440X250mm
Weight: 16.5 KGS



With the extensive development of fixed restoration, more and more temporary crowns are made. The mold extraction method is more suitable for making multi-unit temporary restoration, but for single tooth or less unit restoration, it is more complicated and wasteful, and the patient also feels very uncomfortable. In order to obtain better aesthetic effect and avoid the shortage of traditional self-coagulating resin, our company develops this thermoplastic tray-partial.

Base Plate Wax



BP03, no need tray, no mixing, green materials, and no odor. During operation, the small pieces are soaked in hot water at 70-80 °C, then softened and placed on the teeth that need to be repaired. After the film is hardened, the original tooth shape can be recorded.

It is mainly used in dental restoration to create a single crown with a complete crown or a temporary crown bridge with fewer units (3 or fewer).

Item: BP03
Specification: 30.5X15.4X2mm
Packing: 50 pcs/box, 20 boxes/ctn
Carton Size: 190X150X130mm
Weight: 2 KGS



In complete denture restoration, it is very important to determine the relationship between maxillary position and mandible. Usually it is done with the aid of maxillary and mandible bracket. Wax rim is one of the components of jaw brace. The traditional method of wax embankment is to make jaw position record by coiling the wax flakes into wax strips with diameter of 0.8 to 1.0 cm. The operation is complicated and the waiting time of patients is long. In order to improve the efficiency, the wax embankment is made into a finished product with a horseshoe structure.

Wax Rim



BP04, the wax embankment is made into one body, and adheres to the position of the alveolar ridge of the maxillary base according to the arch shape, easy to operate and saves time for dentists. It can also be used as a functional balance of occlusal wax.

The red wax rim is hard and the blue wax rim is soft, which can meet the requirements of different temperature environments.



Red (hard) ■ Blue (soft) ■



IG05

Dental Implant Guide System Kit

Dental Implant Guide System Kit



IG05

- IG05, it is suitable for the implant of single teeth and multiple teeth, determine the location more accurately and quickly.
- Zirconia material, it can be autoclavable at 134°C, with high hardness and high strength, good at wear resistance and oxidation resistance.
- The thermoplastic film can be softened after hot water immersion to cover and make retention on the adjacent teeth. A better operation position can be positioned by the system. Given the location and quantity of implant, the system can be for single tooth and multiple teeth.

Item: IG05

Specification: 150X100.7X45mm

Packing: 1 set/box, 10 boxes/ctn

- Dental implant surgery, due to the rich jaw nerve and blood vessels and individual differences among different patients, it is so hard for dentists to control the position and angles during their drilling in the jaw. And peripheral tissue can be unnecessary damaged. Including: zirconium drill 2 pcs, guide rod 4 pcs, inner circle 3 pcs, outer circle 3 pcs, partial implant guide 4 pcs, implant guide 12 pcs.



Zirconium drill



Guide rod



Circle



Partial implant guide

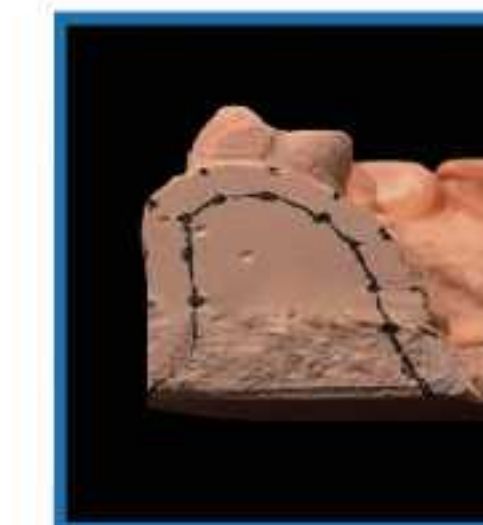


Implant guide

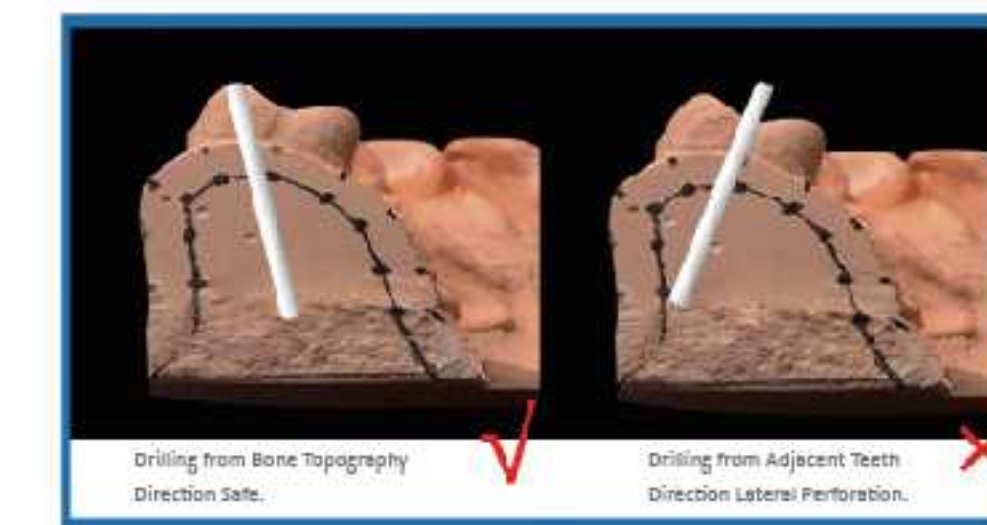
Instructions for single teeth implant guide plate:



- Cut the plaster model in central position where needs to do implanting.



- Draw bone topography.



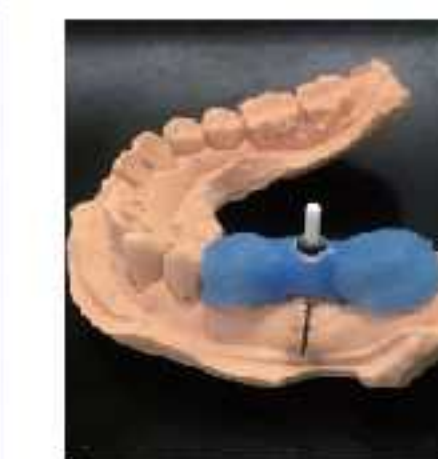
- According to bone topography, draw position and direction of guide rod.



- Take a zirconia drill in kit, grind 1.1mm groove on both side of plaster model, insert the guide rod, and then glue the two half plaster model together.



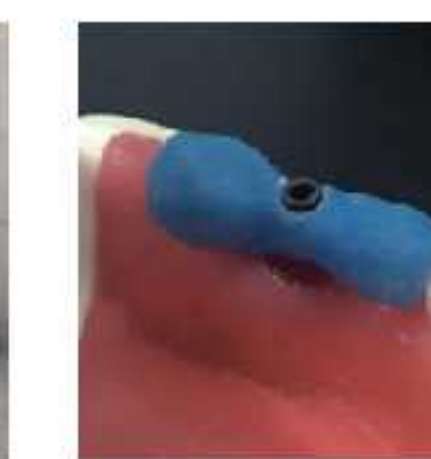
- Take single teeth implant guide plate, soak and soften it into hot water, after the color becomes transparent, take out.



- Place the single teeth guide plate on the plaster model, and make shape.



- Take down when the plate becomes harder.



- Black inner ring suits for drill below 2.3mm.



- White inner ring suits for drill below 3.0mm.



Impression Tray

Implant Tray



■ We use special transparent materials for easy observation of the direction of the teeth and implant rods. There are 18 detachable fan-shaped bottom plates attached to the bottom of the dental arch area, which can be quickly and easily removed according to the tooth position. This product does not need to make individual tray again, no need to punch holes, just remove the bottom plate corresponding to the implant rod. It is suitable for planting impression or conventional impression taking.

■ It's disposable, need to do heat sterilization at 134°C.
 Item: IG0601/IG0602/IG0603/IG0604/IG0605/IG0606/IG0607
 Packing:(1#-6#) 6 pcs/bag,100bags/ctn
 Carton Size:790X410X530mm
 Weight:12.4KGS

Clear



Implant Tray



■ According to different arch shapes, choose a correct implant tray.
 ■ Rotate the implant tray into the oral cavity, determine the corresponding impression-bearing area of the transfer handle and mark it.
 ■ Remove the corresponding base plate, mix the impression material, pour it evenly into the tray and put it into the mouth. We use one-time model taking technology, so please rotate the transfer handle before solidification and take both model and implant tray out.

Item: IG07
 Packing: 6pcs/bag,100bags/ctn
 Weight: 9.8KGS



Implant Tray



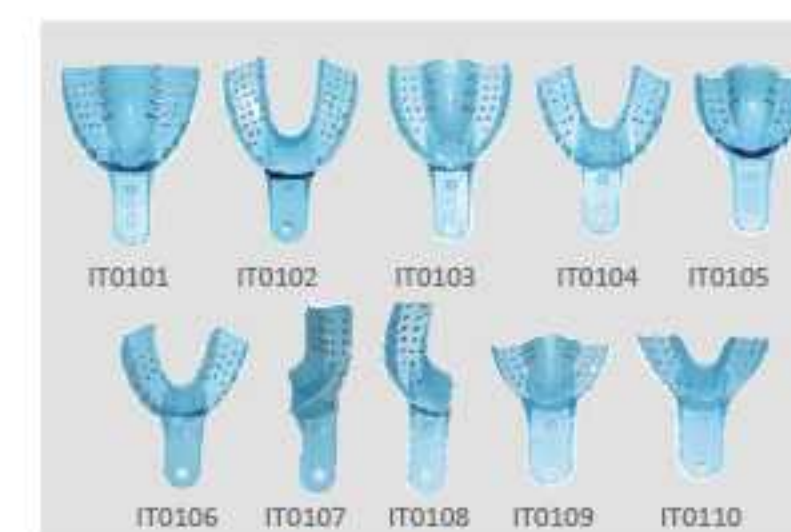
■ Type I: There are 18 detachable fan-shaped plates at the bottom of the arch area, which can be removed quickly and conveniently according to the tooth position.
 ■ Type II: The arch area is covered with an easily penetrating film that takes the mold accurately and cleanly.

IG04 Implant Tray				
Packing 1 (see list)	1 set	5 pcs	1 set	5 pcs
Packing 2 (see list)	6 sets		6 sets	
Packing 3 (see list)		24 pcs		24 pcs
Packing 4 (see list)				24 pcs
Packing 5 (see list)				24 pcs

Item: IG04
 Carton Size: 440X440X245mm



Disposable Impression Tray



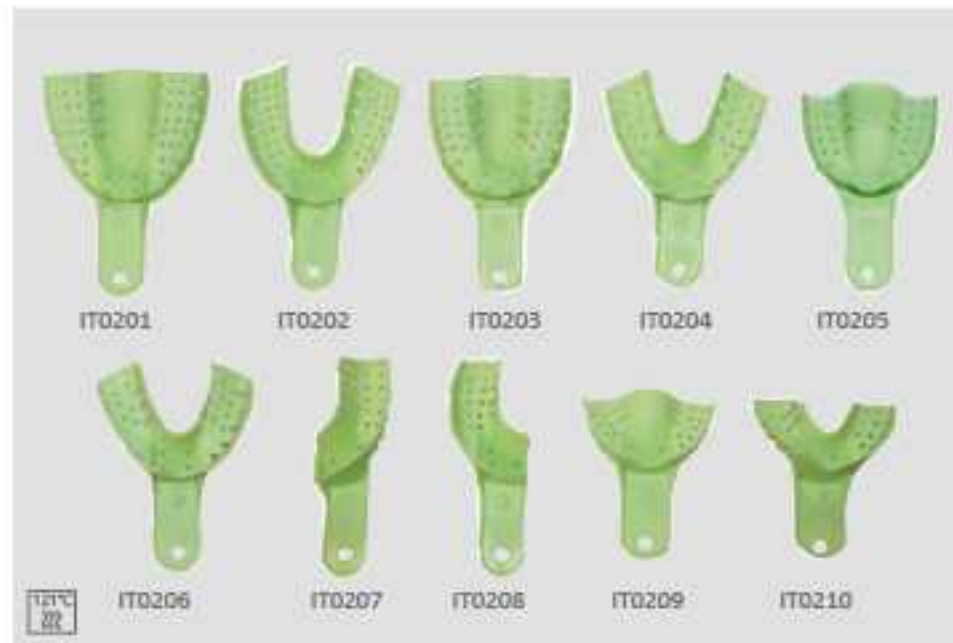
Item: IT01
 Packing: (1#-10#)10 pcs/bag,100 bags/ctn;(1 set)10 pcs/box,56 boxes/ctn
 Carton Size: (bag)460X400X490mm/(box)500X360X440mm
 Weight: (bag)12 KGS/(box)9 KGS

Blue





Autoclavable Impression Tray



Item: IT02
 Packing: (1#-10#)10 pcs/bag,100 bags/ctn;(1 set)10 pcs/box,56 boxes/ctn
 Carton Size: (bag)460X400X490mm/(box)500X360X440mm
 Weight: (bag)10 KGS/(box)7.5 KGS

Green



Adjustable Impression Tray



■ IT05,the product has the stability of stainless steel,the deformability of plastic steel,and the comfort of plastic,which will eventually form an individual tray.
 ■ It is not easy to deform after molding,and can be reused.

Item: IT05
 Packing: (1#-6#)6 pcs/box,20 boxes/ctn
 Carton Size: 320X290X390mm
 Weight: 4 KGS

Gray



Impression Tray



■ According to different patients' mouth situations, adjusting shape and size of the product and put it into their mouth.

Item: IT08
 Packing:6pcs/box



Impression Tray Holder



■ IT06,the bottom of the product is composed of a base,vertical frame, back slat,tray and hanging bar.It is mainly used to place the impression tray after getting the mold,to avoid sticking or squeezing deformation of the impression tray after getting the mold,and to more effectively ensure the completeness and accuracy of the mold.

Item: IT06
 Packing: 1 set/box,16 boxes/ctn
 Carton Size: 520X440X350mm
 Weight: 14 KGS



Tray Base



Item: TB01
 Specification: Square Head/Lower: L:100X78X28mm; M:90X69X28mm; S:81X60X28mm. Cups Head/Upper: L:100X82X28mm; M:90X72X28mm; S:81X63X28mm.

Packing: 1 set/box,45 boxes/ctn
 Carton Size: 440X320X250mm
 Weight: 13 KGS

Blue



Bite Tray



■ IT07,the product consists of an alveolar and a handle.There is no front-to-back connection to accurately obtain the dental mold and reduce the foreign body sensation during the treatment of the patient.

Item: IT07
 Packing: 20 pcs/box,32 boxes/ctn
 Carton Size: 440X430X250mm
 Weight: 4.5 KGS

Light Yellow
 Light Orange
 Light Green
 Light Blue
 Light Purple



Teeth Whitening Tray



■ Silicone medical EVA material thermoplastic dental tray, with high transparency, molded tray can maintain high transparency, especially suitable for use with cold light whitening instrument.
 ■ Can be repeatedly molded, even if molded effect is not good, and it can be reshaped in hot water at 90 ° C.

■ As a tray for tooth whitening and whitening glue, it can also be used as an anti-wear tooth tray.

Item: TT01
 Packing: 2 pcs/unit,10 units/bag,50 bags/ctn
 Carton Size: 460X350X260mm
 Weight: 7.5 KGS



Bite Tray



Item: BT
 Packing: 20 pcs/bag,50 bags/ctn
 Carton Size: (BT01)520X350X375mm,(BT02)460X350X260mm, (BT03)430X430X290mm,(BT04)420X270X230mm, (BT05)280X260X230mm
 Weight: (BT01)8.1 KGS,(BT02)5.5 KGS,(BT03)7.4 KGS,(BT04)3.6 KGS, (BT05)1.8 KGS



Disposable Fluoride Foam Tray



■ DT01,it is made of PE material, which is mainly used for washing teeth and protecting fluorine. The product is soft and flexible, which is comfortable for patients to bite. It can bite the upper and lower teeth at the same time, making the treatment process more convenient and quick.

Item: DT01
 Specification: (L)193X65mm,(M)180X60mm,(S)160X55mm
 Packing: (L)50 pcs/bag,50 bags/ctn,(M)50 pcs/bag,60 bags/ctn, (S)50 pcs/bag,80 bags/ctn
 Carton Size: 710X360X655mm
 Weight: (L)5.8 KGS,(M)5.5 KGS,(S)5.8 KGS

Green (S)
 Yellow (M)
 Blue (L)



09



Denture Box

Denture Box



The upper open tooth box.

Item: DB05
 Specification: 95X74X39mm
 Packing: 12 pcs/box, 20 boxes/ctn
 Carton Size: 460X400X450mm
 Weight: 11 KGS

- White
- Pink
- Light Green
- Light Blue



Denture Box



Rectangular denture box with a false toothbrush and mirror, easy to carry.

Item: DB11
 Specification: 115.8X92X37.6mm
 Packing: 1 pc/box, 40 boxes/ctn
 Carton Size: 430X270X240mm
 Weight: 6.5 KGS

- Grey



Denture Box



The middle opening box.

Item: DB02
 Specification: 82X85X46mm
 Packing: 12 pcs/box, 24 boxes/ctn
 Carton Size: 520X520X420mm
 Weight: 11.7 KGS

- Light Yellow
- Light Blue
- Light Orange
- Light Green
- Light Purple
- Light Orange Yellow



Denture Box



Upper opening box, upper cover is protruding.

Item: DB06
 Specification: 99X77X59mm
 Packing: 12 pcs/box, 16 boxes/ctn
 Carton Size: 475X400X500mm
 Weight: 9.1 KGS

- White
- Pink
- Light Green
- Light Blue



Denture Box



The tooth box for deaning and soaking dentures is made up of boxes and hanging baskets.

Item: DB20
 Specification: 95X55X83mm
 Packing: 1 pc/bag, 120 bags/ctn
 Carton Size: 500X360X440mm
 Weight: 13 KGS

- Clear Blue





Denture Box



DB03

All kinds of colourful denture boxes can protect the denture, impression trays, retainers and keep from the dust, keep clean and healthy.

Item: DB03
Specification: 82X85X29mm
Packing: 12 pcs/box, 30 boxes/ctn
Carton Size: 540X410X490mm
Weight: 11.7 KGS

- Light Yellow
- Light Blue
- Light Orange
- Light Green
- Light Purple
- Light Orange Yellow



Denture Box



DB08

There are 8 holes on the upper and lower sides of the box, which are generally used to place retainers.

Item: DB08
Specification: 80X78X28mm
Packing: 12 pcs/box, 30 boxes/ctn
Carton Size: 500X360X430mm
Weight: 12 KGS

- Yellow
- White
- Pink
- Light Green
- Light Blue
- Clear Blue



Denture Box



DB12

Triangular tooth box, small and beautiful.

Item: DB12
Specification: 80X66X27mm
Packing: 12 pcs/box, 30 boxes/ctn
Carton Size: 520X350X370mm
Weight: 10.4 KGS

- Yellow
- White
- Pink
- Green
- Blue



Membrane Box



DB14

An elastic film is mounted on the upper and lower parts of the box to protect dentures from damage during transportation and storage.

Item: DB14
Specification: 55X50.2X25mm
Packing: 12 pcs/box, 32 boxes/ctn
Carton Size: 460X350X260mm
Weight: 11 KGS

- Yellow



Denture Box



DB15

It is made up of upper cover and lower bottom, and the inner part of the upper cover is pressed with glass lens.

Item: DB15
Specification: 82.5X74X29mm
Packing: 1 pc/box, 200 boxes/ctn
Carton Size: 430X430X290mm
Weight: 16 KGS

- Black
- White



Milk Teeth Box



DB16

A small tooth box that can be suspended.

Item: DB16
Specification: 22X22mm
Packing: 5 pcs/bag, 10 bags/box, 48 boxes/ctn
Carton Size: 500X360X440mm
Weight: 8.5 KGS

- Yellow
- White
- Purple
- Green
- Pink



Denture Box



DB17

The top cover can rotate the tooth box, may hold the retainer.

Item: DB17
Specification: 87X28mm
Packing: 12 pcs/box, 30 boxes/ctn
Carton Size: 500X360X450mm
Weight: 15 KGS

- Rose Red
- Blue



Denture Box



DB01

It consists of box body and inner net, which can be used to clean dentures only by lifting the handle of inner net.

Item: DB01
Specification: 92X85X57mm
Packing: 12 pcs/box, 16 boxes/ctn
Carton Size: 540X410X490mm
Weight: 12.8 KGS

- White
- Pink
- Light Green
- Light Blue



Denture Box



DB07

It has upper cover, inner net and bottom, which can be used to store the whole denture.

Item: DB07
Specification: 86X78X78mm
Packing: 4 pcs/box, 30 boxes/ctn
Carton Size: 500X360X430mm
Weight: 13 KGS

- Green
- Dark Green



Denture Box



DB04

The upper open tooth box.

Item: DB04
Specification: 95X73X56mm
Packing: 12 pcs/box, 16 boxes/ctn
Carton Size: 475X400X500mm
Weight: 10 KGS

- White
- Pink
- Light Green
- Light Blue



10



Disposable Dental Air Water Syringe Tips

Disposable Dental Air Water Syringe Tips



■ AWT01,universal three-in-one Air Water Syringe Tips. The inner tube is made of stainless steel and the outer tube is made of white plastic.

Item: AWT01
Specification: 84X Φ 3.87mm
Packing: 250 pcs/box,30 boxes/ctn
Carton Size: 290X260X230mm
Weight: 11.6 KGS

White



Disposable Dental Air Water Syringe Tips



■ AWT02,white plastic material. Independent plastic tube structure without core. There are two modes with Syringe to use: water spray and water vapor.

Item: AWT02
Specification: 80X Φ 3.87mm
Packing: 250 pcs/box,30 boxes/ctn
Carton Size: 290X260X230mm
Weight: 7 KGS

White



Disposable Dental Air Water Syringe Tips



■ AWT03,universal three-in-one Air Water Syringe Tips. Hard plastic material. The inner tube is colored and the outer tube is transparent plastic

Item: AWT03
Specification: 92X Φ 3.87mm
Packing: 250 pcs/box,40boxes/ctn
Carton Size: 420X270X230mm
Weight: 13.1 KGS

Light Yellow
Light Orange
Light Green
Light Blue
Light Purple
White



Disposable Dental Air Water Syringe Tips



Item: AWT05
Specification: 76X Φ 3.87mm
Packing: 250 pcs/box,40 boxes/ctn
Carton Size:290X260X230mm
Weight: 9.8 KGS





ST07

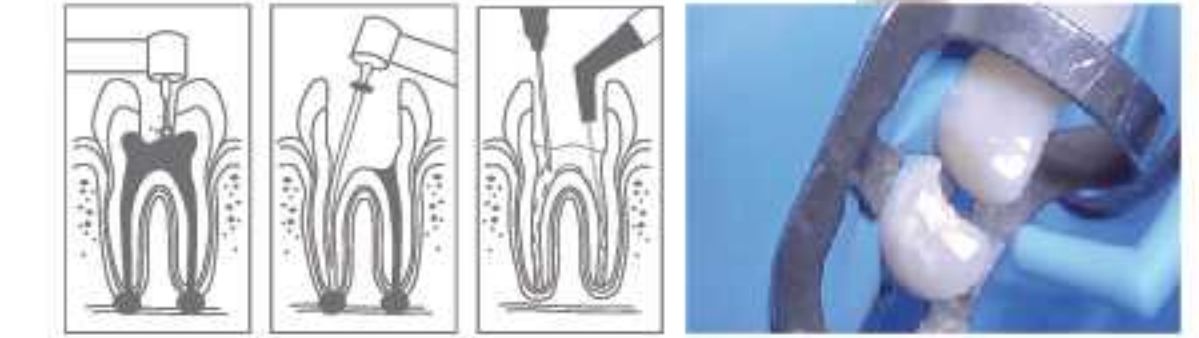
Endodontic Aspirator Tip



ST07, The soft aspirating tip is designed with multi-directional flexibility. Without entering into the end of root canals, it can be used the principle of negative pressure to suck out fluids in the cavities, canals, multiple canals and lateral branches.

ST07C/ST07B pressure suction to remove the liquid in the root canal and the side branches of the root canal without entering the end of the root canal.

Item: ST07/ST07B/ST07C
 Packing: 1pc/bag, 20bags/box, 20boxes/ctn
 Carton Size: 320X190X260mm
 Weight: 3 KGS
 Remark: tip diameter 0.6mm



Evacuation Tip



ET01, the hole design can relieve the discomfort of patients under the condition of strong inhalation.

Item: ET01
 Specification: 148X11mm
 Packing: 100 pcs/bag, 20 bags/ctn
 Carton Size: 480X335X280mm
 Weight: 8 KGS
 Inner: 10mm
 Remark: Vented/Non-Vented



Surgical Aspirator Tip



ST01/ST02/ST03, universal disposable surgical aspirator tips. Use with 11mm Suction Valves.

ST01(Green) ST02(White) ST03(Blue)

Item: ST01/ST02/ST03
 Caliber: (ST01)5.8mm, (ST02)3.8mm, (ST03)2.5mm
 Packing: 25 pcs/bag, 100 bags/ctn
 Carton Size: (ST01/ST03)400X400X370mm, (ST02)430X430X290mm
 Weight: 11.6 KGS
 Remarks: (ST01)1/4"Green, (ST02)1/8"White, (ST03)1/16"Blue



Surgical Aspirator Tip



The tube with two functions, absorb saliva, blood and other objects effectively.

Item: ST01B
 Caliber: 1.65mm
 Packing: 25pcs/bag, 100bags/ctn
 Carton Size: 395X395X365mm
 Weight: 12.8 KGS



Disposable Saliva Ejectors



Surgical Aspirator Tip

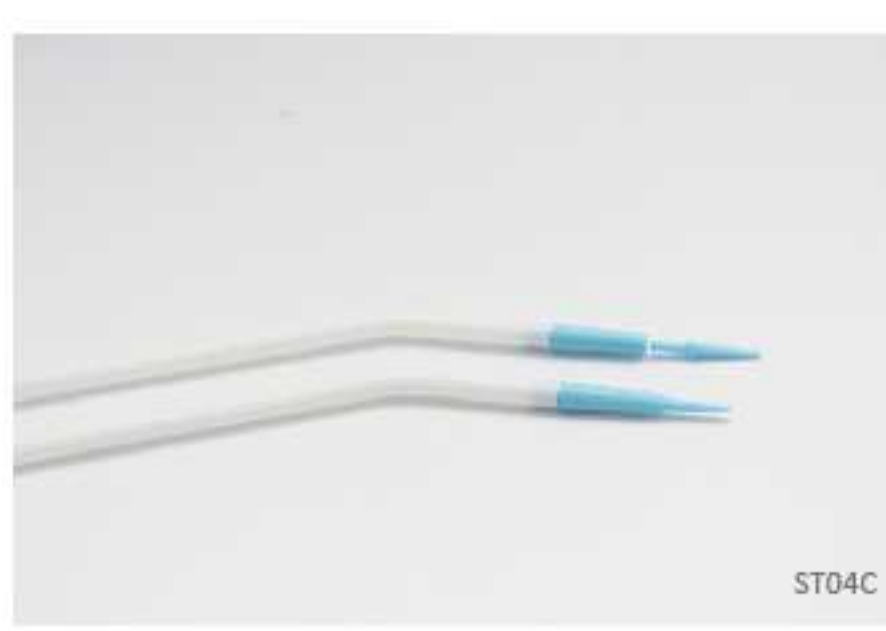


■ ST06A can be use to match with ST01/ST02/ST03;
ST06A+ST06B can be used to match with ST04.

Item: ST04
Caliber: 2.5mm
Packing: 1 pc/bag,25 bags/box,40 boxes/ctn
Carton Size: 500X430X320mm
Weight: 6.3 KGS
Remarks: one box of aspirator tips match with pair of Surgical Aspirator Adaptor.
Item: ST06A/ST06B
Name: Surgical Aspirator Adaptor
Packing: 50 pcs/bag,60 bags/ctn
Carton Size: (ST06A)430X320X290mm(ST06B)420X270X230mm
Weight:(ST06A)13.7KGS,(ST06B)9.5KGS



Surgical Aspirator Tip



■ The tube with two functions, absorb saliva,blood and other objects effectively .

Item: ST04C
Caliber: 1.65mm
Packing: 1 pc/bag,25 bags/box,40 boxes/ctn
Carton Size: 500X430X320mm
Weight: 6.3 KGS



Disposable Saliva Ejectors



■ The head is designed to side opening, which can increase the safety and comfort of patients. It contains metal wire, which facilitates the fixation of disposable saliva ejectors.

Item: SE01
Specification: 150X6.5mm
Packing: 100 pcs/bag,20 bags/ctn
Carton Size: 350X290X240mm
Weight: 10 KGS



Disposable Saliva Ejectors



■ The head is designed to side opening, which can increase the safety and comfort of patients. It contains metal wire, which facilitates the fixation of disposable saliva ejectors.

Item: SE02
Specification: 150X6.5mm
Packing: 100 pcs/bag,20 bags/ctn
Carton Size: 350X290X240mm
Weight: 10 KGS



Cotton Roll Dispenser





Cotton Roll Dispenser



CD01,the product is composed of main body, top cover, movable tongue, bottom, non-slip pad and pin.

The bottom non-slip pad is designed to limit the skidding of the roll case during the roll process and is easy for the user to operate.

Item: CD01
 Specification: 112X48X120mm
 Packing: 1 pc/box,30 boxes/ctn
 Carton Size: 430X430X290mm
 Weight: 7 KGS

Blue
 Green



Cotton Roll Dispenser



CD02,Press Type Cotton Roll Dispenser. Easy to use, clean and sanitary.

Streamlined design and transparent material. It is used for storage and selection of cotton rolls.

Item: CD02
 Specification: 120X55X97mm
 Packing: 1 pc/box,40 boxes/ctn
 Carton Size: 500X320X220mm
 Weight: 9 KGS

Blue
 White



Cotton Roll Dispenser



CD03,Drawer Type Cotton Roll Dispenser.The products are mainly composed of main body, upper cover, drawer, bottom and retainer metal blocks.

Item: CD03
 Specification: 108X53X102mm
 Packing: 1 pc/box,42 boxes/ctn
 Carton Size: 460X350X260mm
 Weight: 13 KGS

Blue
 White



Cotton Roll Clip



CDM,the product is made of PP material, good elasticity, suitable for large and medium and small cotton roller to tighten, effective against moisture.

Item: CDM
 Specification: 16.8X20X22.4mm
 Packing: 5 pcs/bag,10 bags/box,40 boxes/ctn
 Carton Size: 430X270X240mm
 Weight: 3.3KGS

Gray
 Brown



Cotton Ball Dispenser



CD05,Cotton Ball Dispenser is used to store sterile small cotton balls. It has a drawer-type storage box for easy loading and unloading of small cotton balls, the bottom is equipped with a sponge block.

Item: CD05
 Packing: 1 pc/box,64boxes/ctn
 Carton Size: 430X430X290mm
 Weight: 10.2 KGS

White



Bur Holder Box & Measuring Gauge





Bur Holder Box



- BB01, it is made of plastic material, can place high speed burs and low speed burs.
- Bottom part can be autoclavable at 121°C.

Item: BB01
 Specification: 89X66mm
 Packing: 1 pc/box, 60 boxes/ctn
 Carton Size: 480X290X320mm
 Weight: 6 KGS
 Remarks: 60 slots

Blue
 White



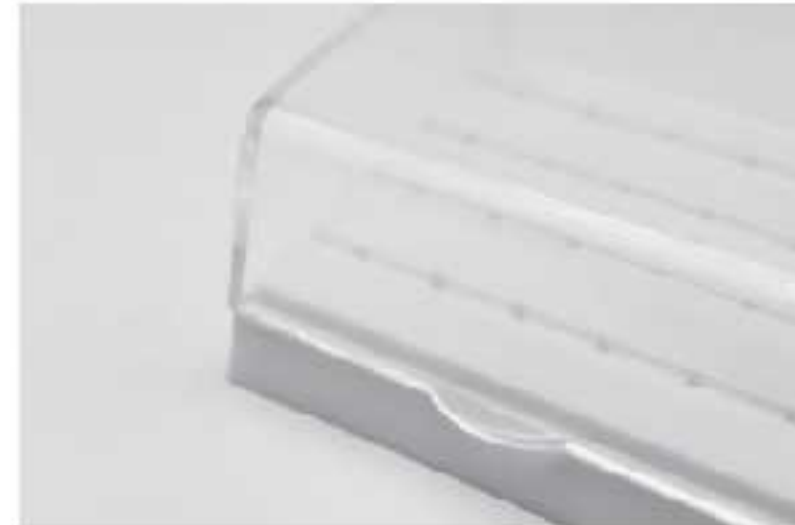
Bur Holder Box



- BB02, it is made of plastic, specially designed for high-speed burs.
- Bottom part can be autoclavable at 121°C.

Item: BB02
 Specification: 74X60X36mm
 Packing: 1 pc/box, 100 boxes/ctn
 Carton Size: 430X270X240mm
 Weight: 4.5 KGS
 Remarks: 24 slots

Blue
 White



Bur Holder Box



- BB03, it is made of plastic material, can place high speed burs and low speed burs.
- Bottom part can be autoclavable at 121°C.

Item: BB03
 Specification: 89X91mm
 Packing: 1 pc/box, 60 boxes/ctn
 Carton Size: 480X390X320mm
 Weight: 7 KGS
 Remarks: 60 slots

Blue
 White



Bur Holder Box



Item: BB09
 Specification: 120X53mm
 Packing: 1 pc/box, 54 boxes/ctn
 Carton Size: 400X400X370mm
 Weight: 7 KGS
 Remarks: 166 slots

Blue



Bur Holder Cleanser



- BC01, it is made of autoclavable plastic materials, suitable for the placement of tools such as burs, root canals, and enlarged needles before oral treatment; with transparent materials, dentists can easily find the tools they need.

Item: BC01
 Specification: 83X90mm
 Packing: 1 pc/box, 48 boxes/ctn
 Carton Size: 390X390X270mm
 Weight: 7.5 KGS
 Remarks: 60 slots

Blue
 Clear



- When the dentist is performing root canal treatment, the closedness of the apex often determines the success or failure of the final treatment. Sometimes the root canal is well prepared, but it is easy to overfill or underfill when filling. The main reason is that the size of gutta percha point is not enough, either too large or too small, and some dentists ignore the use of gutta-percha measuring ruler.

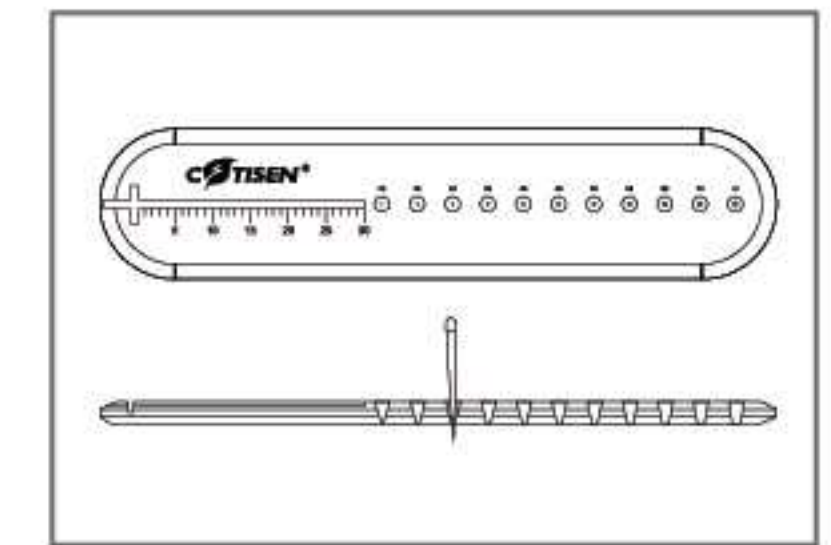
Gutta-Percha Measuring Ruler



- BF0517, promisee Dental developed the gutta-percha measuring rule which made of Zirconia.
- Length range is 30mm, hole diameter is from 20-80, total 11 tapered holes, which can meet the requirements of gutta percha point accuracy Length and diameter.
- Suitable for accurate measurement of the diameter of the apex of the main apex of the gutta percha point, and can also be used as a tool for inspecting the wear of the root canal instrument.
- Ultra-high accuracy, the accuracy does not change under different environments.

Advantage:

- Health and environmental protection. Ceramic material itself has chemical stability, antioxidant, restlessness, acid and corrosion resistant.
- Stylish appearance, mellow color, pure, jade texture, bring noble enjoyment.
- Smooth Surface, easy to clean.
- High hardness, high wear resistance.
- High temperature and pressure resistant. It is applicable to accurate tip diameter measurement and also can be used as a tool to test tip wear of root canal instruments.



Item: BF0517
 Specification: 90X20X3.5mm
 Packing: 1 pc/box



Bur Holder Frame



Item: BF01
 Specification: 65X38X12mm
 Packing: 20 pcs/bag, 36 bags/ctn
 Carton Size: 440X340X300mm
 Weight: 8.6 KGS
 Remarks: 16 slots



Root Canal Frame



- BF02, the product is made of PA material and has a hollow structure, which is convenient for taking instruments. It is mainly used for measuring the length of root canal files during dental treatment.

Item: BF02
 Specification: 75X52.5X10mm
 Packing: 3 pcs/box, 48 boxes/ctn
 Carton Size: 265X170X180mm
 Weight: 4.5 KGS

Gray Brown





Root Canal Measuring Table



Gray ■ Brown ■

BF03A/BF03B, the product is made of PA material, which is autoclavable 134 ° C, and has a hollow structure design, which is convenient for handling equipment.

Item: BF03A/BF03B
Specification: (BF03A)89x20.6x32mm,
(BF03B)89x26x32mm
Packing: 1 pc/box,250 boxes/ctn
Carton Size: (BF03A)320x320x250mm,
(BF03B)430x270x240mm
Weight: (BF03A)9 KGS,(BF03B)9.6 KGS



Microdont



Gray ■ Brown ■

BF04, the product is made of PA material, which is autoclavable 134 ° C, easy to do operation.

Item: BF04
Specification: 90x13x2.8mm
Packing: 3 pcs/package,10 packages/box,14 boxes/ctn
Carton Size: 240x155x107mm
Weight: 2 KGS



Root Canal Measuring Ruler



Gray ■ Brown ■

BF05, the product is made of PA material, which is autoclavable 134 ° C, easy to do operation.

Item: BF05
Specification: 42x23.3x23.9mm
Packing: 2 pcs/package,24 packages/box,6 boxes/ctn
Carton Size: 240x155x107mm
Weight: 1.5 KGS

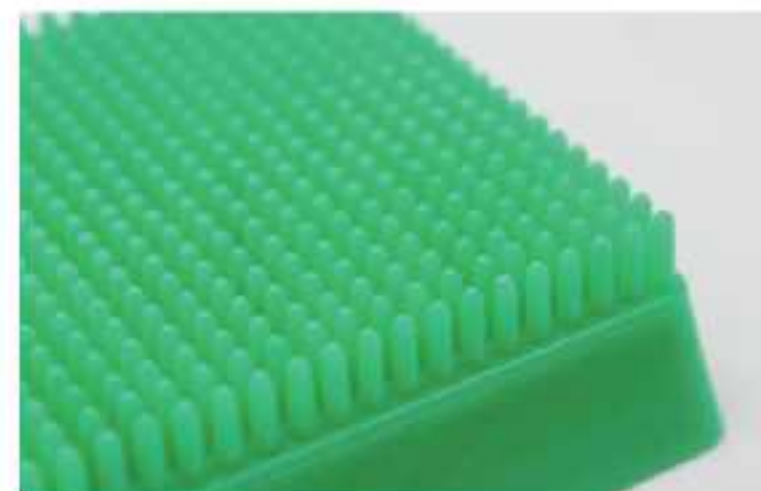


Grinding Carriage



Green ■

Item: BF06
Specification: 128x82x23mm
Packing: 1 pc/box,200 boxes/ctn
Carton Size: 500x360x440mm
Weight: 14 KGS



Safety Glasses & Face Shield with Frame



During oral treatment, protective products to prevent spatters have been widely used, among which masks are widely used.

Face Shield(Anti-fog)



FF05,protective shields can prevent splash and anti-fog.

Item: FF05
 Packing: 1 frame+10 shields/box,40 boxes/ctn
 Carton Size: 530X380x480mm
 Weight: 9.8 KGS
 Remarks: (shields)10 pcs/bag,100 bags/ctn

- Blue
- Gray
- Purple



Face Shield(Anti-fog)



Item: FF04
 Specification: 350X225mm
 Thickness: 0.18mm
 Packing: 1 pc/bag,200 bags/ctn
 Carton Size: 700X380X400mm
 Weight: 8.6 KGS



Face Shield(Anti-fog)



Item: FF06
 Specification: 350X225mm
 Thickness: 0.25mm
 Packing: 1 pc/bag,50 bags/ctn
 Carton Size: 690X360X335mm
 Weight: 2.9 KGS

- A
- B
- C
- D



Face Shield (Anti-fog)



Item: FF01
 Packing: 1 frame+10 shields/box,40 boxes/ctn
 Carton Size: 630X450X380mm
 Weight: 12 KGS
 Remarks: (shields)10 pcs/bag,100 bags/ctn

- Blue
- Green
- White



Safety Glasses(Anti-fog)



SG08,safety goggle - designed to protect your Eyes from High impact objects and virus.Designed for industrial, commercial, and household duties anti fog & ventilated - soft & light, specially ventilated & non-tinted lenses guarantees crystal clear vision all the time.

Item: SG08
 Packing: 1 pc/bag,10bags/box,20boxes/ctn
 Carton Size: 800X430X460mm
 Weight: 19.3 KGS
 Remarks: People with glasses also available



Safety Glasses(Anti-fog)



Item: SG08A
 Packing: 1 pc/bag,10bags/box,20boxes/ctn
 Carton Size: 800X430X460mm
 Weight: 19 KGS
 Remarks: People with glasses also available

Safety Glasses(Anti-fog)



SG01,the mirror is made of polycarbonate, which can effectively block strong light. It is suitable for hospitals and other working places, and can effectively prevent flying sand, dust and other splashes from causing eye damage.

Item: SG01
 Packing: 1 pc/box,100 boxes/ctn
 Carton Size: 520X350X370mm
 Weight: 7.8 KGS

- Red
- Orange
- White



Safety Glasses



SG02,the mask shield is an anti-fog sheet, which is resistant to scratches and flashes, and can fully protect the mouth, nose and eyes.

Item: SG02/SG03(Anti-fog)
 Packing: 1 pc/box,100 boxes/ctn
 Carton Size: 520X350X370mm
 Weight: 7.2 KGS
 Remarks: (SG02)Red, Yellow,Blue;(SG03)Blue

- Yellow
- Blue
- Red





Safety Glasses



Item: SG04
Packing: 12 pcs/box,18 boxes/ctn
Carton Size: 500X360X430mm
Weight: 10 KGS



Yellow
Clear

Safety Glasses



Item: SG06
Packing: 12 pcs/box,18 boxes/ctn
Carton Size: 500X360X430mm
Weight: 10 KGS



Disposable Eyeshield(Anti-fog)



Item: DE01
Packing: 1 frame+1 shield/set,5 sets/bag,100 bags/ctn
Carton Size: 430X270X240mm
Weight: 5.4 KGS
Remarks: (shields)10 pcs/bag,300 bags/ctn



Yellow
Green
Blue
Purple

Light Curing Glasses Clips

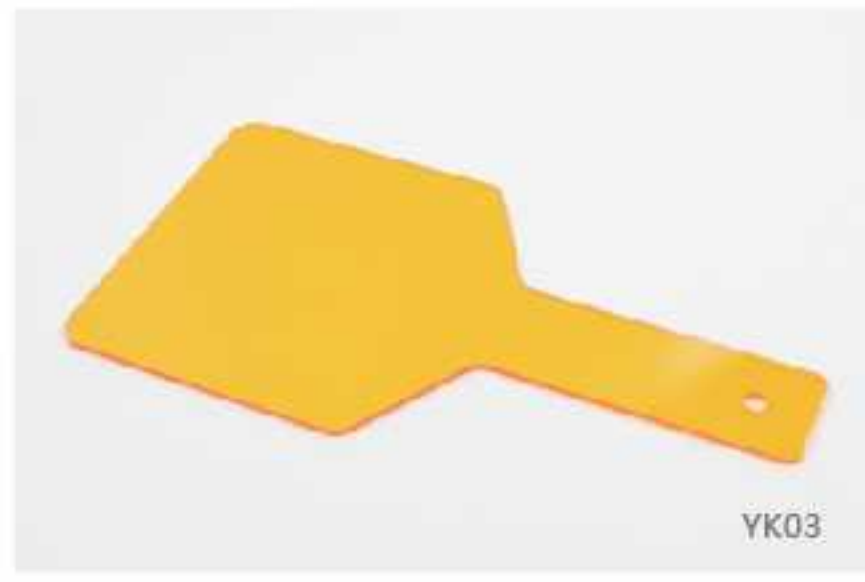


Item: SG09
Packing: 1 pc/box,20 boxes/ctn
Carton Size: 625X315X265mm
Weight: 11.5 KGS



Red

Protective Light Hand Shield



Item: YK03
Specification: 127X240X3mm
Packing: 1 pc/bag,100 bags/ctn
Carton Size: 290X260X230mm
Weight: 8.3 KGS



Medical Instrument





Hy-Drop



Hy-drop consists of a medicine bottle, a dropper and a silicone pad. It is a small device for storing medicines for a short period of time. Mainly used to store oral medicine, such as camphor, formaldehyde cresol, 3% hydrogen peroxide, 2% sodium fluoride, etc.

Item: MW03
Specification: 33X35X43mm
Packing: 1 pc/box,144 boxes/ctn
Carton Size: 440X440X250mm
Weight: 4.8 KGS

- Light Yellow
- Light Green
- Light Blue
- Light Purple



Disposable Dappen Dish



Be put into using completely for one time,may save time and be guarded against cross-infection.Be used for etching agent and binder.

Item: DD01
Specification: 23X32mm
Packing: 100 pcs/box,20 boxes/ctn
Carton Size: 490X170X190mm
Weight: 4.5 KGS

- Yellow
- Pink
- Blue
- White



Glass Dappen Dish



Assorted coloured glass dappen dishes,suitable to mix small dose.

Item: GD01
Specification: 33X33mm
Packing: 1 pc/box,12 boxes/unit,18 units/ctn
Carton Size: 360X170X280mm
Weight: 11 KGS

- Amber
- Green
- Blue
- White



Prophy Paste Ring



Put it on our fingers.Convenient for dentists to take medicine.

Item: DD030A
Packing: 20 pcs/bag,100 bags/ctn
Carton Size: 430X430X290mm
Weight: 7.3 KGS

- Light Green
- Light Blue
- Light Purple



Prophy Paste Ring



Put it on our fingers.Convenient for dentists to take medicine.

Item: DD030B
Packing: 20 pcs/bag,100 bags/ctn
Carton Size: 430X430X290mm
Weight: 4.5 KGS

- Light Green
- Light Blue
- Light Purple



Disposable Dappen Dish



New disposable dishes can be stuck on the hands for using more conveniently.

Item: DD02
Specification: 32X13mm
Packing: 100 pcs/bag,75 bags/ctn
Carton Size: 520X520X420mm
Weight: 7.4 KGS

- White



Mixing Well



Item: MW01/MW02
Specification: (MW01)51X51X10mm,(MW02)51X28X10mm
Packing: (MW01)200 pcs/box,24 boxes/ctn
(MW02)200 pcs/box,45 boxes/ctn
Carton Size: (MW01)400X400X370mm,
(MW02)440X340X320mm
Weight: (MW01)12.3 KGS,(MW02)11.5 KGS

- White



Mixing Rod



Item: MR01
Packing: 100 pcs/bag,70 bags/ctn
Carton Size: 290X260X230mm
Weight: 12.8 KGS

- White

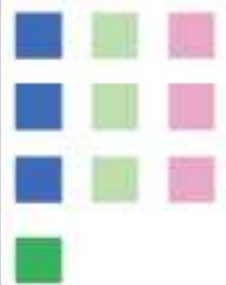


Mixing Bowl



Flexible plastic products,can be used repeatedly after cleaning.Four sizes

Item	Capacity	Specification	Packing	Carton Size	Weight	Color
MB01	690ml	130X96mm	100 pcs/ctn	560X270X270mm	12.6 KGS	Blue,Clear Green,Clear Red
MB02	280ml	108X59mm	180 pcs/ctn	430X330X290mm	14.9 KGS	Blue,Clear Green,Clear Red
MB03	150ml	84X50mm	250 pcs/ctn	420X270X240mm	9.2 KGS	Blue,Clear Green,Clear Red
MB04	500ml	130X86mm	100 pcs/ctn	560X270X270mm	12 KGS	Green



Silicone Small Bowl



Flexible silicone rubber products,five different models suitable for different work,washable for repeated use.Sucker cup bottom, with easy to put the bowls firmly on the smooth surface such as glass.

Item	Capacity	Specification	Packing	Carton Size	Weight
SB01 XL	100ml	70X55mm	1 pc/box,144 boxes/ctn	440X440X250mm	6 KGS
SB01 L	30ml	50X40mm	12 pcs/box,25 boxes/ctn	480X290X320mm	6 KGS
SB01 M	10ml	36X38mm	12 pcs/box,56 boxes/ctn	390X390X370mm	9 KGS
SB01 S	8ml	31X23mm	12 pcs/box,120 boxes/ctn	430X430X290mm	8.1 KGS
SB01 SS	5ml	25X25mm	12 pcs/box,144 boxes/ctn	430X430X290mm	7.5 KGS



Spatula



Dentists can choose different types of spatula according to different medicines and mixing amounts; the deformed design of the handle and the texture of the matte increase friction and are convenient to use.

Item: SP01
Specification: 195X32mm
Packing: 50 pcs/bag,10 bags/ctn
Carton Size: 420X270X240mm
Weight: 10 KGS

- Pink
- Blue
- White



Spatula



Item: SP02
Specification: 185X25mm
Packing: 50 pcs/bag,20 bags/ctn
Carton Size: 420X270X240mm
Weight: 9 KGS

- Pink
- Blue
- White



Spatula



Item: SP03
Specification: 185X33mm
Packing: 25 pcs/bag,16 bags/ctn
Carton Size: 420X270X240mm
Weight: 10 KGS

- Pink
- Blue
- White



Disposable Mouth Mirror



Item: MM01
Specification: 160X20mm
Packing: 1 pc/pouch,100 pouches/bag,20 bags/ctn
Carton Size: 430X430X290mm
Weight: 14 KGS

- Yellow
- Pink
- Blue
- White



Disposable Mouth Mirror



Item: MM04
Specification: 170X20mm
Packing: 1 pc/pouch,100 pouches/bag,20 bags/ctn
Carton Size: 430X430X290mm
Weight: 15 KGS

- White



Disposable Plastic Tray



Item: DPT01
Specification: 190X148X15mm
Packing: 400 pcs/ctn
Carton Size: 310X210X195mm
Weight: 2.65 KGS
Remark:Even

- White



Disposable Plastic Tray



Item: DPT02
Specification: 190X148X15mm
Packing: 400 pcs/ctn
Carton Size: 310X210X195mm
Weight: 2.68 KGS
Remark:Milled

- White



Disposable Plastic Tray



Item: DPT03
Specification: 289X190X17mm
Packing: 400 pcs/ctn
Carton Size: 400X305X140mm
Weight: 5.06 KGS
Remark:Even

- White



Disposable Plastic Tray



Item: DPT04
Specification: 284X186X17mm
Packing: 400 pcs/ctn
Carton Size: 400X305X140mm
Weight: 5.1 KGS
Remark:Milled

- White





Compule Dispenser Gun



- Compule dispenser gun is used for conveying ceramic veneer bonding resin.
- It can be used repeatedly, need to do heat sterilization at 134°C before using. (Note: Please disassemble the product as below firstly, then do sterilization.)

Item: CG01
 Specification: 150X100mm
 Packing: 160 pcs/ctn
 Carton Size: 420X320X290mm
 Weight: 9 KGS



Lift the Clip



Apart Firstly, then Sterile it

Compule Dispenser Gun Bullets



- The bullet material can avoid the light, and is a safe injection resin material. Bullet is disposable, and can prevent cross infection.

Item: CG02
 Packing: 100 pcs/bag, 100 bags/ctn
 Carton Size: 360X60X280mm
 Weight: 10.26KGS



Black ■

Autoclavable Plastic Tray



- It can be filled with different kinds of medical instruments, against contamination.

Item: APT01
 Specification: 336X240x23mm
 Packing: 40 pcs/ctn
 Carton Size: 370X270X245mm
 Weight: 10 KGS

Green ■
Blue ■

Autoclavable Instrument Kit



Item: AK01
 Packing: 60 pcs/ctn
 Carton Size: 520X410X190mm
 Weight: 5.9 KGS-8 KGS

Alcohol Lamp



Item: AL01
 Capacity: 100ml
 Packing: 1 pc/box, 60 boxes/ctn
 Carton Size: 520X430X340mm
 Weight: 13.9 KGS



Neaten Case



- For technical use neaten case, the clamping piece on the slice can be used to fix paper, color variety, convenient for distinguishment.

Item: NCD1
 Specification: 154X138X205mm
 Packing: 50 sets/ctn
 Carton Size: 430X330X300mm
 Weight: 7.7 KGS

Yellow ■
 Purple ■
 Orange ■
 Blue ■
 Red ■
 Black ■
 White ■



Curved Utility Syringe



Item: CS01
 Capacity: 12ml
 Packing: 50 pcs/bag, 25 bags/ctn
 Carton Size: 500X360X430mm
 Weight: 12.4 KGS



Straight Syringe



Item: CS02
 Capacity: 5ml
 Packing: 50 pcs/bag, 20 bags/ctn
 Carton Size: 510X345X370mm
 Weight: 8 KGS





Disposable Dental Examination Kit(8in1)



It is used for oral diagnosis and treatment,through strict disinfection and sterilization of ethylene oxide,which can prevent various diseases caused by cross infection.Including:mouth mirror,probe,forceps,bibs,facial tissue,tray,cotton balls,saliva ejector.

Item: DK04
Packing: 200 sets/ctn
Carton Size: 600X390X310mm
Weight: 10 KGS

Disposable Dental Examination Kit(7in1)



Ideal for the diagnosis and treatment of dental,avoid of all kinds of diseases because of cross-infection.Sterilized by ethylene oxide strictly,two years valid date.Including:mouth mirror,probe,forceps,bibs,facial tissue,tray,cotton balls.

Item: DK03
Packing: 200 sets/ctn
Carton Size: 600X390X310mm
Weight: 9 KGS

Disposable Dental Examination Kit(3in1)



Item: DK01
Packing: 1 set/pouch,20 pouches/bag,25 bags/ctn
Carton Size: 420X270X230mm
Weight: 10.5 KGS

Disposable Dental Examination Kit(3in1)



Item: DK01A
Packing: 1 set/pouch,20 pouches/bag,25 bags/ctn
Carton Size: 420X330X310mm
Weight: 10.5 KGS

X-Ray Film Holder



Angled with both ends working to take both anterior and posterior films. Help finishing the technique photograph of correcting the angular bisector.

Item: XH01
Specification: 126X25X11mm
Packing: 4 pcs/box,200 boxes/ctn
Carton Size: 430X330X310mm
Weight: 16 KGS

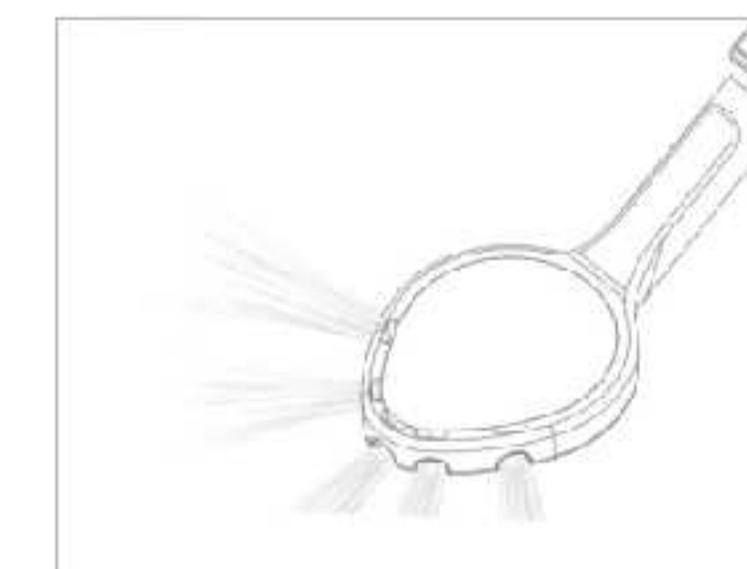
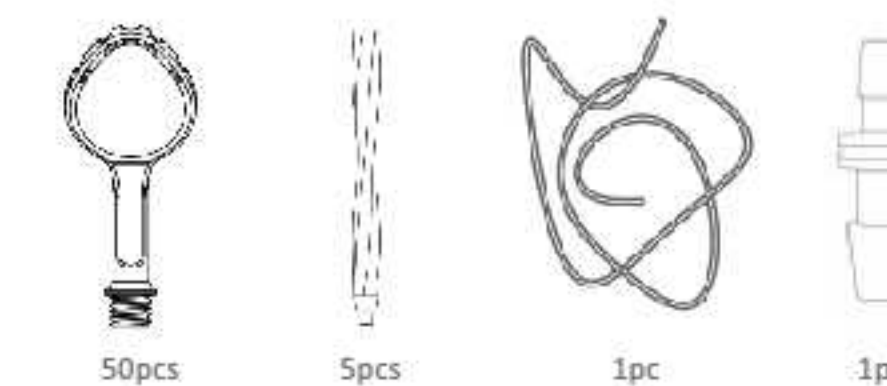


Disposable Mouth Mirror

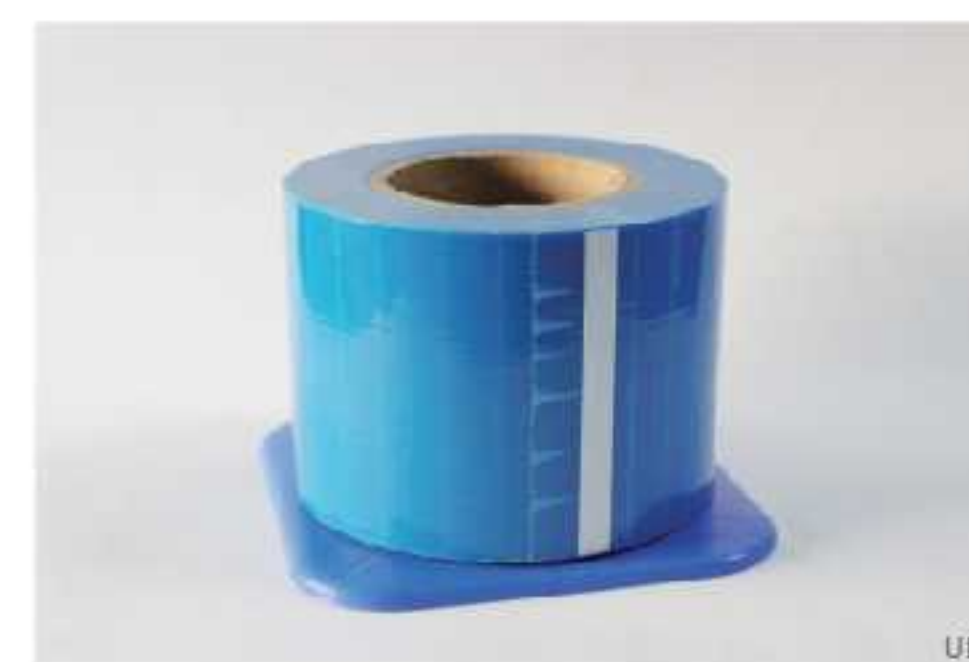


Oral Examination/Retraction /Aspiration of saliva

Item: MM05
Packing: 50 pcs/box



Universal Barrier Film



Universal barrier film protect the equipment against other pollution,and the smart design make people use it more easily.Total 1200 sheets,length of each sheet:10 cm.

Item: UF
Packing: 1 pc/box,8 boxes/ctn
Carton Size: 360X350X280mm
Weight: 10 KGS
Remark: With Edge/Without Edge



Barrier Film Dispenser



Item: TH06B
Specification: 242X137X180mm
Packing: 1 pc/box,12 boxes/ctn
Carton Size: 530X380X480mm
Weight: 9 KGS



Dental Bib Clip



Silicone material for the colored part,stainless material for the head part.

Item: QI15C
Specification: Length of silicone material:397mm;
Head part length:51mm
Packing: 1 pc/pouch,5 pouches/bag,100 bags/ctn
Carton Size: 400X400X370mm
Weight: 10 KGS





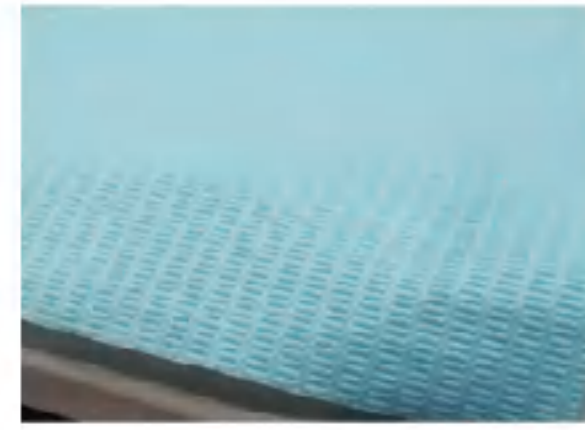
Dental Bib



This dental bib made of three-layer pressing process, it can absorb moisture instantly.

Item: QI17A
Packing: 125pcs/bag,4bags/ctn
Specification: 330X450mm
Carton Size: 350X250X250mm
Weight: 3.5KGS

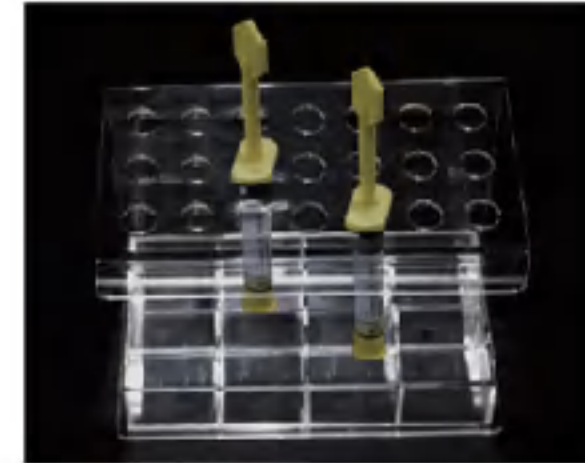
- pink
- Green
- Blue
- Purple



Multi-function Holder



Item: TH04MFL/TH04MFS
Specification: (TH04MFL)192X115X141mm,
(TH04MFS)112X112X141mm
Packing: 1pc/box,20boxes/ctn
Carton Size: (TH04MFL)500X360X440mm
(TH04MFS)440X440X250mm
Weight: (TH04MFL) 10KGS
(TH04MFS) 5.9KGS



Dental Bib Box



Item: TH07
Specification: 175X135X200mm
Packing: 1pc/box,12pcs/ctn
Carton Size: 460X400X490mm
Weight: 8.2KGS



Resin Syringe Holder



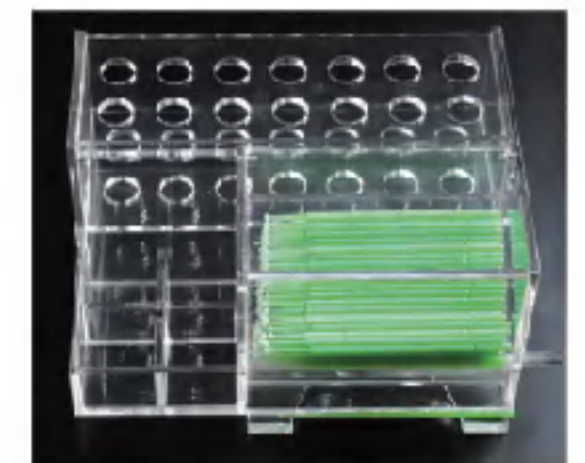
Item: TH02L/TH02S
Specification: (TH02L)203X108X130mm,
(TH02S)102X108X130mm
Packing: 1pc/box,20boxes/ctn
Carton Size: (TH02L)660X450X320mm
(TH02S)640X320X280mm
Weight:(TH02L)9.4KGS
(TH02S)4.6KGS



Multi-function Holder



Item: TH04MF7
Specification: 210X160X95mm
Packing: 1pc/box,16boxes/ctn
Carton Size: 460X40X490mm
Weight: 11.3KGS



Instrument Brush



Item: QI16
Specification:102X40X34mm
Packing: 1 pc/bag, 10bags/box,40 boxes/ctn
Carton Size:480X450X240mm
Weight: 15.75 KGS

- White



Disposable Sterilization Roll



MID01

Disposable Sterilization Pouch



Self Seal MID02



HeatSeal MID03

Item	Specifcation	Packing	Carton Size
MID0101	50mm*200m	12 Rolls/ctn	410*215*315mm
MID0102	55mm*200m	12 Rolls/ctn	410*215*345mm
MID0103	75mm*200m	8 Rolls/ctn	410*215*315mm
MID0104	100mm*200m	6 Rolls/ctn	410*215*315mm
MID0105	150mm*200m	4 Rolls/ctn	410*215*315mm
MID0106	200mm*200m	2 Rolls/ctn	410*215*215mm
MID0107	250mm*200m	2 Rolls/ctn	410*215*265mm
MID0108	300mm*200m	2 Rolls/ctn	410*215*315mm

Item	Specifcation	Packing	Carton Size
MID0201	57mm*130mm	200 pcs/box,30 boxes/ctn	295*285*205mm
MID0202	70mm*260mm	200 pcs/box,15 boxes/ctn	295*280*240mm
MID0203	90mm*165mm	200 pcs/box,20 boxes/ctn	355*295*205mm
MID0204	90mm*260mm	200 pcs/box,10 boxes/ctn	295*280*205mm
MID0205	135mm*280mm	200 pcs/box,10 boxes/ctn	300*295*295mm
MID0206	190mm*360mm	200 pcs/box,5 boxes/ctn	380*295*210mm
MID0207	200mm*320mm	200 pcs/box,5 boxes/ctn	340*295*220mm
MID0208	200mm*360mm	200 pcs/box,5 boxes/ctn	380*295*220mm
MID0209	230mm*395mm	200 pcs/box,5 boxes/ctn	415*295*250mm
MID0210	305mm*430mm	200 pcs/box,5 boxes/ctn	450*295*320mm

Item	Specifcation	Packing	Carton Size
MID0301	75mm*200mm	200 pcs/bag,20 bags/ctn	320*220*165mm
MID0302	75mm*300mm	200 pcs/bag,20 bags/ctn	320*320*165mm
MID0303	100mm*200mm	200 pcs/bag,15 bags/ctn	320*220*165mm
MID0304	100mm*300mm	200 pcs/bag,15bags/ctn	320*320*165mm
MID0305	150mm*300mm	200 pcs/bag,10 bags/ctn	320*320*165mm
MID0306	200mm*400mm	200 pcs/bag,10 bags/ctn	420*420*165mm
MID0307	250mm*450mm	200 pcs/bag,5 bags/ctn	470*270*165mm
MID0308	300mm*500mm	200 pcs/bag,5 bags/ctn	520*320*165mm



DS01A/DS01B



DS02A/DS02B



DS03A



DS04A



DS05A

Product Name	Item	Specification	Packing	Carton Size
Disposable Dental X-RayFilm Barrier	DS01A	44mm*33mm	100 pcs/box,200boxes/ctn	495*270*300mm
Disposable Dental X-RayFilm Barrier	DS01B	33mm*44mm	100 pcs/box,200 boxes/ctn	495*270*300mm
Disposable Digital X-RaySensor Cover	DS02A	42mm*200mm	500 pcs/box,36 boxes/ctn	340*250*270mm
Disposable Digital X-RaySensor Cover	DS02B	45mm*200mm	500 pcs/box,36 boxes/ctn	
Disposable Dental CuringLight Sleeve	DS03A	320mm*50mm	500 pcs/box,36 boxes/ctn	400*350*270mm
Disposable DentalFull Chair Cover	DS04A	29" * 80"	130 pcs/box,3 boxes/ctn	440*340*270mm
Disposable Dental ChairHeadrest Cover	DS05A	11" * 9 1/2" * 2"	250 pcs/box,12 boxes/ctn	540*330*210mm

16



Children Teeth Series

Dental Sectional Contoured Matrices Kits



- SC15 is used as an auxiliary prosthesis for Class II cavity filling.
- By adjusting the position and Angle of the forming piece, the tooth adjacent surface shape and adjacency relationship can be better restored.
Item:SC15

SC15 Contains:

 PW01 Dental wedge 20pcs	 PW02 Dental wedge 20pcs	 Ordinary Matrix Bands 100pcs	 Dental Guard 15pcs	 MH03 1pc
 PW03 20pcs	 PW07 Dental wedge 20pcs		 PW05(left)5 pcs (right)5 pcs Dental Wedge left right	

Dental Sectional Contoured Matrices Kits



- The clamp head is more lower, suitable for children's teeth with low crowns and narrow teeth neck structure, and more stable clamping
- Handheld design, more convenient operation.

Item:SC1502/SC1503

SC1502/SC1503 Contains:

 PW01 20pcs	 PW02 20pcs	 Ordinary Matrix Bands SC0502M:50PCS	 Dental Guard 15pcs	 SC1605 1pc
 PW03 20pcs	 PW07 15pcs		 PW05(left)5 pcs (right)5 pcs Dental Wedge left right	

 PW01 20pcs	 PW02 20pcs	 Ordinary Matrix Bands SC0503S:50PCS	 Dental Guard 15pcs	 SC1605 1pc
 PW03 20pcs	 PW07 15pcs		 PW05(left)5 pcs (right)5 pcs Dental Wedge left right	

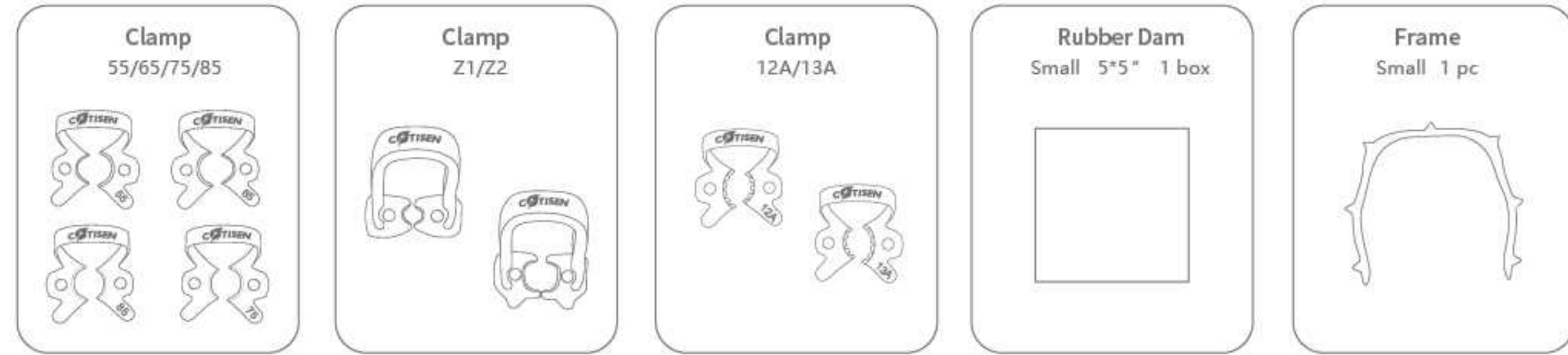


Dental Dam Kit



- RD12 is used for isolation and protection during dental treatment;
- The set is designed for children's teeth and patients with small oral clefts;
- The clamp has a matte surface to reduce reflections and avoid visual fatigue;
- The clamp and frame can be sterilized at 134° C.

Packing:1set/box
Item:RD12

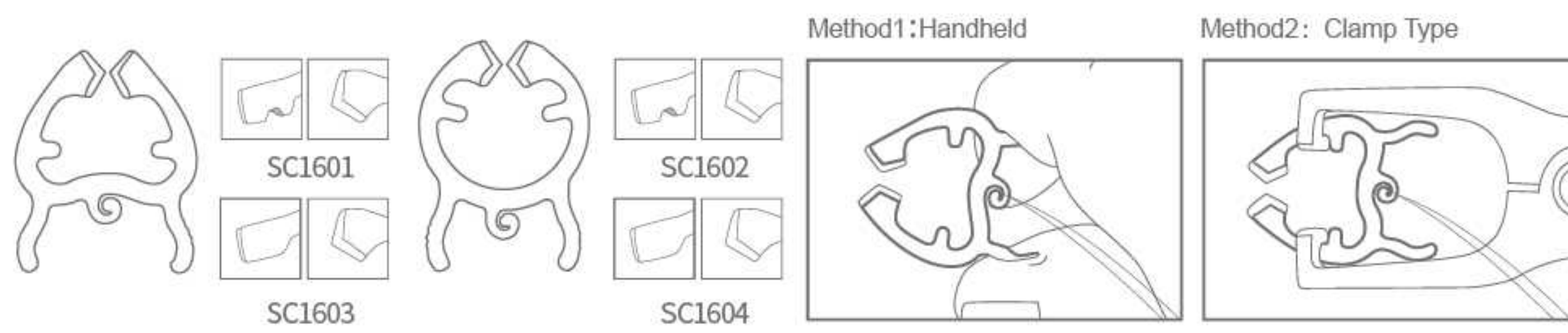


Clamping Ring



- The chuck is made of soft and hard plastic, which is stable and non-slip;
- The spiral hook design in the middle of the clamping ring is convenient for fixing the dental floss during treatment;
- It can be held by hand or opened with a forceps.

Packing:30pcs/box,100boxes/ctn
Item:SC16



Clamping Ring for Dental Use



- The clamp head is more lower, suitable for children's teeth with low crowns and narrow teeth neck structure, and more stable clamping
- Handheld design, more convenient operation.

Packing:1pc/box,30boxes/ctn
Item:SC1605

Strip Crown Forms



- There are multiple models for each tooth position. The doctor selects the appropriate size according to the patient's needs, injects the resin into the model, and fastens it to the affected tooth to save time on resin piling up.

Item:EYGC02

Metal Crown



- Bioidentical and non-allergenic surface oxidation treatment
- Crown scissors trim crown edges easily and effortlessly
- Soft sides facilitate simple contouring

Item:EYCG01

Fluor Protector



- Provide long-term protection for teeth against the risk of caries;
- Simple operation and easy to store.

Item:EYF001

Fluorinated Foam



- Thick foam
- Fluoride can prevent dental caries in children
- Flavor:Strawberry

Item:EYF002

Item:DH02

Mouth Mirror



- Clear imaging, vivid colors, front surface reflection, no ghosting.
- Unique hydrophobic technology, water drops into balls and rolls down.
- The curved arc better fits the shape of the mouth corners and the pulling is stable.

Item:MM06



Saliva Absorbents



- Used to absorb saliva in the mouth

Packing:50pc/box,178boxes/ctn
Item:ST08

Disposable Mouth Mirror



- Anti-fog
- The doll can be disassembled and is designed with cute patterns, that let children not resist dental care

Packing:20pcs/box,20boxes/ctn
Item:MM02

Invisible Braces Box



- New high-quality material, good aging resistance, durable and good texture. The lens and braces are separated in layers, dry and wet, to avoid lens contamination.

- Orange
- Yellow
- Green

Item:DB21

Invisible Braces Box



- Bionic design, simple and elegant
- Exquisite and compact, easy to control
- Built-in edible food-grade silicone material, no fear of bumps.

Item:DB22

Fiber-Free Micro Applicator



- High molecular polymer hot melt integrated molding technology, 100% fiber-free and glue-free, no risk of bristle shedding
- Even bristles, stable liquid retention
- Hydrophobic surface can greatly reduce liquid residue, reducing drug waste by 70% compared to traditional applicator sticks
- Thermoplastic elastomer material, with good alkali resistance and corrosion resistance

Packing:100pcs/keg,4kegs/box,32boxes/ctn
Item:DYMA01

- White
- Yellow
- Green

Micro Applicator:



Fiber-Free Micro Applicator:



C-TISEN®

17



Environmentally friendly products



■ Bamboo is a renewable resource. Bamboo products are environmentally friendly and sustainable. They have certain flexibility and strength, a natural and beautiful appearance, a comfortable touch, and are easy to hold.

■ PLA materials come from starchy crops such as corn and wheat. Under appropriate conditions, PLA materials can be completely biodegradable, becoming water and carbon dioxide. The biocompatibility of PLA materials means that there is an extremely low risk of allergies and adverse reactions to the human body.

Gingival brushes



Denture Box



Cheek Retractor



Cheek Retractor



Brush holder/Applicator tip



Toothbrush



Adhesive Tip Applicator



Evacuation Tip



Evacuation Tip



Disposable Mouth Mirror



Disposable Dental Air Water Syringe Tips



Disposable Mouth Mirror



Surgical Aspirator Tip



Disposable Impression Tray

